

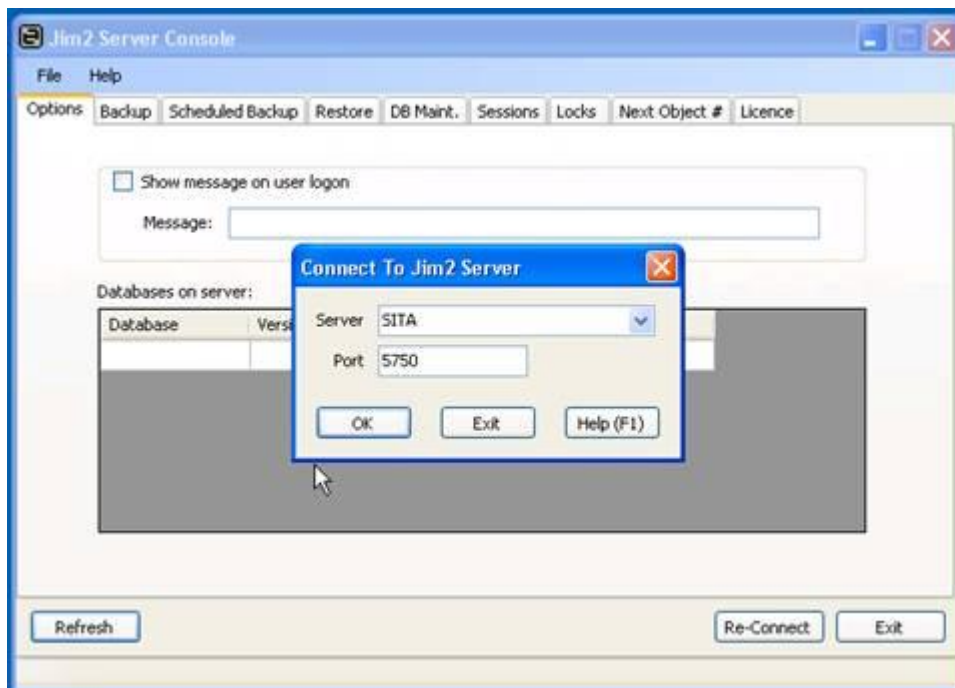
Restoring your Training Database from your Live Database

Having a training copy of your database is a great way to train new staff, and test out ideas, before doing them into your live database. Restoring your live database to a training one is a two step process:

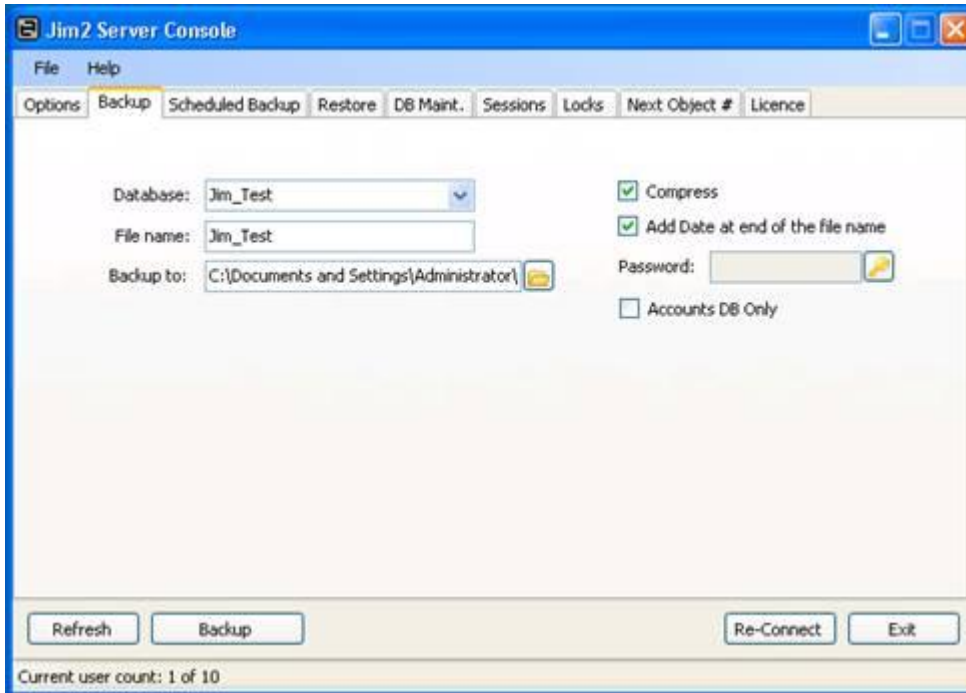
- Backup your current Database
- Restore to a training Database

Backup your Current Database

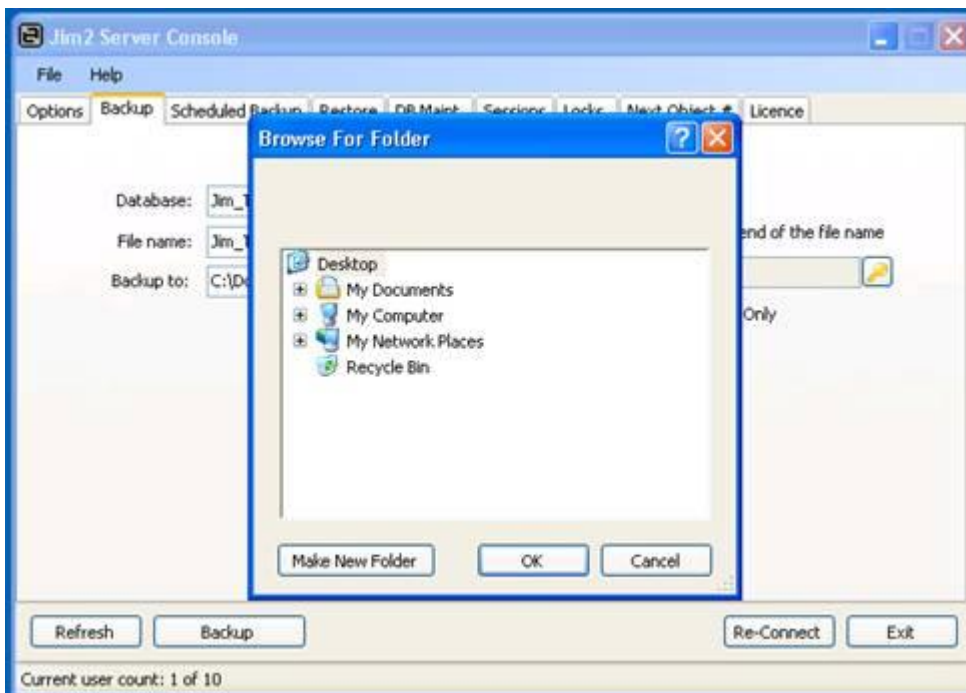
- Log into the Jim2 Server Console (Jim2serverconsole.exe). It is usually found in your Jim2 or Jim2 Server Directory on the Jim2 Server



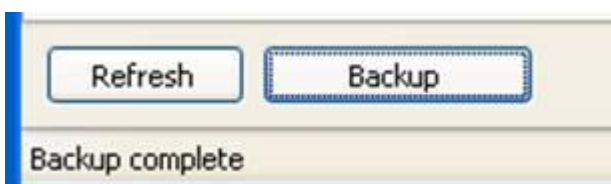
- If you need to authenticate when you log in, you will need to use the user "sa" and the sa password, as set up when SQL Server was installed.
- After you have logged in, go to the Backup Tab.
- Choose your live database from the database dropdown – in this case we are using Jim_Test



- Choose where you want to save the file in the Backup To: field – we recommend the Desktop in this case. Click on the Yellow Folder Icon and choose the desktop

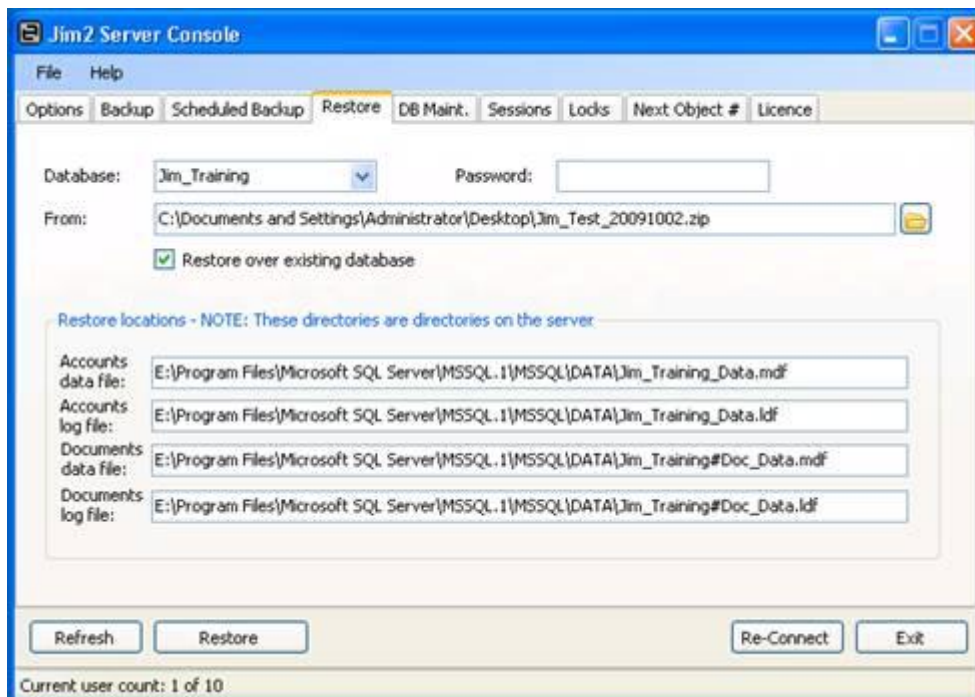


- When everything is ready, click the “Backup” button. When the backup is finished the console will tell you so in the lower left hand corner:

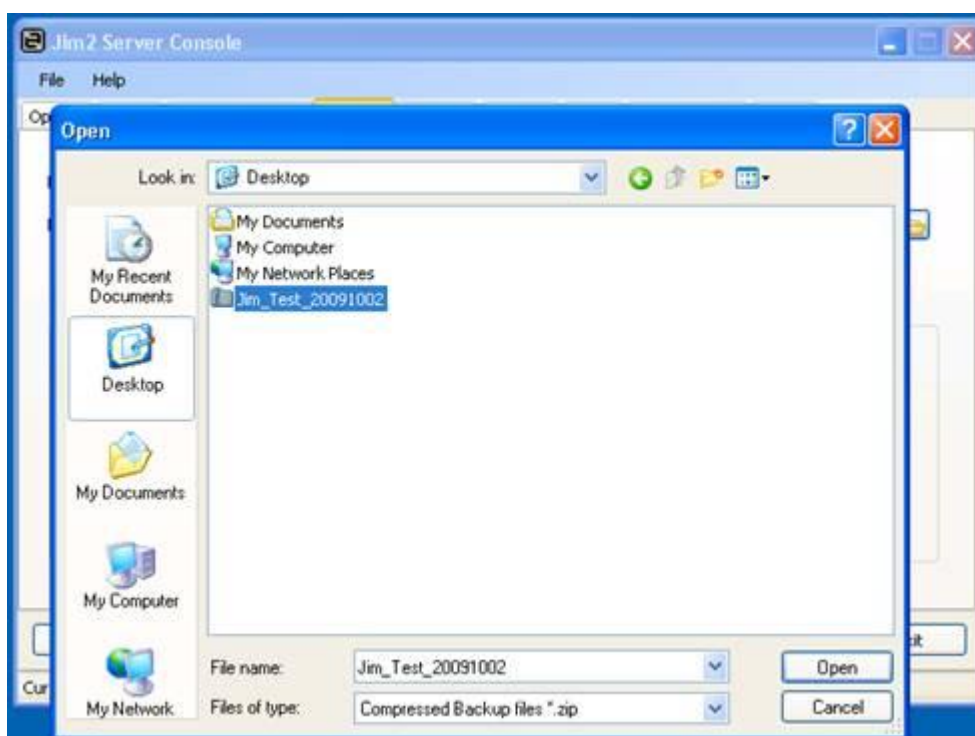


Restore to a Training Database

- Go to the Restore Tab.
- In Database: field, Name your Training database name – in this case Jim_Training

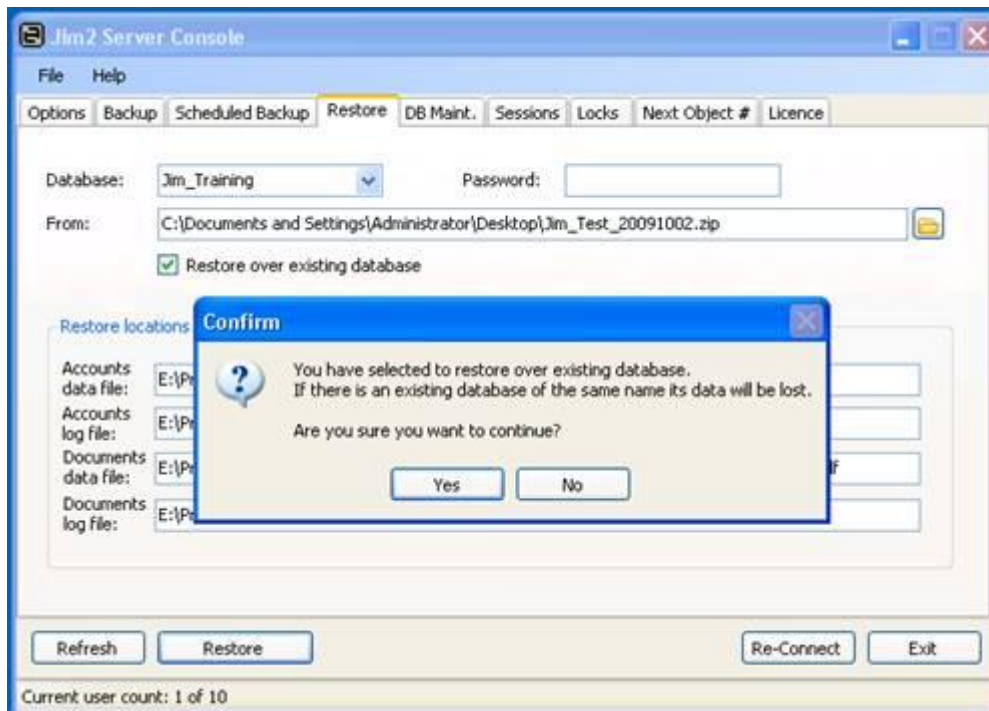


- In the From: field, we need to find the backup you Just completed. Click on the Yellow folder, go to the Desktop and choose the file you just backed up:



- Put a Tick next to "Restore over existing database". Most likely you will already have a training database and this will restore this new database in its place.

- When ready, click the restore button. You will received a confirm message for what you are about to do. Make sure everything is correct and click Yes:



- When the restore is complete, the console will tell you in the Lower left hand corner:



- You can now close the Jim2 Server Console by clicking the exit button

Your live database has now been copied to your training database. Next time you log into Jim2 you can now pick the Training database. Your username and password is exactly the same as the live database:

