



Happen Business Pty Limited
Suite 2, 29 - 33 Pitt Street
PO Box 126, Mortdale NSW 2223 Australia
p. +61 2 9570 4696
f. +61 2 8569 1858
w. www.happen.biz

Jim2 Business Engine
version 2.14

Release Notes

Jim2 Business Engine V2.14 release notes – 29/07/05

Official Release - Build 1742 with optional Multicurrency functionality.

We are proud to announce the release of our Multicurrency functionality, which is a fantastic tool for those Jim2 sites purchasing from overseas, and using foreign currency bank accounts. This is a new Jim2 OPTION and is not included as part of your standard Jim2 BE subscription.

Jim2 Business Engine has always excelled in improving workflow and business procedures, and version 2.14 strengthens this even further. We have listened to your 'Wishlist' requests and suggestions and the new features in 2.14 are a direct result of your input. Keep the ideas coming!

Just a special note for all our new sites – welcome! These release notes should provide some great insight into the sort of changes that are introduced during version upgrades, and how YOU can take advantage of them at your site. With easy to follow screen shots, look through each one carefully to see if they can add functionality to your site.

Some of the more exciting new features include...

- NEW - Multicurrency (Optional)
- NEW - Stock Packaging – Ability to put kits into stock
- NEW - New Debtor / Creditor tree grids for easier searching and sorting
- NEW - Email Comments from PO's
- NEW - Flag serial numbers as committed on jobs
- NEW – Stock Procurement
- NEW - Status Benchmarking

Additional enhancements

- Support for RRP-Discount pricing on Quantity Price Breaks
- Debtor/Creditors Payments no longer warn about being backdated if in current month.
- 4 Digits on Expense PO's
- Automated Error Reporting

We have also included the following new or improved Reports –

- Job Labour
- Cardfile list of inactive customers
- Stock Sold in advance
- TopX customers with previous year history
- Changes to Cash GST reports

Make sure you read up on these changes to Jim2 BE – there may be one or many you can use to enhance Jim2 BE even further!

Technical Information & Requirements

Windows 98 Support

Windows 98 is no longer supported by Microsoft and as such, Jim2 V2.14 is the last version that will support Windows 98.

Database V128

To upgrade from Jim2 V2.12 to Jim2 V2.14 backup your database then run **jim2upgrade_214_1742.exe** your server.

The Jim2 update program will automatically update existing version 125 or higher databases to the current version 130. That is – by running the Version 2.14 upgrade, you will have access to these new features and functions WITHOUT affecting your existing Jim2 records.

To manually update a database you have restored:

1. Use the Jim Update program and select the **Jim2update125-130.pas** script, from the UpdateFiles folder in your Jim2 folder.
2. New reports, scripts etc can be installed by importing the **jim2reports_v214.jrpt** file via the Jim2 Report Designer.

Both these files can be located in the UpdateFiles subdirectory after running the **jim2upgrade_214_1742.exe** upgrade program.

Jim2Server V2.13

Jim2Server now logs when Users abnormally terminate in the log file of the related database. This is useful for detecting unreliable networks, client workstations or Users that do not log out of Jim2 in the normal way.

You can check this from the Jim2 client by selecting Tools/History from the menu, selecting the 'Disconnect' object and clicking Run.

Important Notice - Microsoft SQL Service Packs (Jim2 BE version 2.09 onwards)

Prior to upgrading to Jim2 Business Engine Version 2.14, you must ensure you have the latest Microsoft SQL Service Packs installed, with respect to your current network requirements. Check with your Network Administrator prior to actioning.

If you are currently running **Microsoft MSDE 2000** you should download Microsoft MSDE 2000 Service Pack 4. This service pack is recommended.

[Click Here to download Microsoft MSDE 2000 Service Pack 3a \(70Mb approx\)](#)

OR

If you are currently running **Microsoft SQL 2000** you should download Microsoft SQL2000 Service Pack 3a. This service pack is recommended.

[Click Here to download Microsoft SQL 2000 Service Pack 3a \(50Mb approx\)](#)

Why?

Jim2 BE uses mixed mode security. There is a known security issue when running SQL with SA and no password. Happen recommend that this Service pack be installed, however it is not required.

Microsoft SQL Server 2000 appears to have a data integrity issue that is resolved by installing the Service Pack 2 (or greater). In the interest of maintaining the integrity of your database Happen insists that this Service Pack be installed.

[Click Here for more information on Microsoft SQL 2000 Service Pack 3a](#)

Please contact Happen if you require a consultant to install this for you at your premises

Note: The above Microsoft SQL Server information applies from Jim2 BE v2.09 onwards.

If running Microsoft SQL server 2000 it is recommended that you upgrade to SQL service pack 3a due to a potential security issue that has been resolved by Microsoft.

Please also note that Microsoft SQL version 7 is no longer supported by Happen.

New – Multicurrency (Optional)

Introducing Jim2 Multicurrency - capable of handling your business workflow end-to-end in a global economy.

If your firm derives a significant part of its turnover from international trade, exchange rate fluctuations can have a major influence upon results. With a high turnover in foreign currencies, those variations can make a big difference between profit and loss. The resources required in maintaining high volumes of multiple currency transactions, and reporting the impact currency fluctuations on them accurately, impacts on your bottom line too.

Jim2 Multicurrency makes it easy for you to manage both **unrealised gains and losses** (potential changes in the value of overseas transactions) and **realised gains and losses** (the actual changes in the value of your assets, liabilities and equity that occur when you exchange foreign currency for your local currency) by providing accurate, live transaction reporting as you work.

Jim2 Multicurrency allows for an unlimited number of user defined Foreign Currencies. Maintenance of Exchange Rates is easy to manage using the Currency Rate table. Jim2 automates individual Spread Limit % (swing) and 'Out of Date' warnings on each Currency to ensure accuracy and encourage vigilance when dealing with the volatility of foreign exchange.

Jim2 Multicurrency removes any need for separate Creditor identities to trade in multiple currencies. The suite of practical documents and professional business reports in Jim2 supports all Multicurrency requirements.

The Jim2 Multicurrency Revaluation Session is a professional tool for recording and reporting your foreign currency position. Fully integrated into the functionality of Jim2 Business Engine, this feature now reports your Unrealised foreign exchange exposure at any point in time, automatically creates the journals required when currencies are revalued, with automatic Realisation journals created on full or part payment of invoices.

All the power and proven functionality you've come to expect from Jim2 Business Engine – now including fully integrated Multicurrency.

Seeing is believing – there's nothing else like Jim2 Business Engine.

Click on this link to view the [Multicurrency Factsheet](#) on our website.

New – Stock Packaging



A **Kit** (Dynamic or Static) is a combination of stock codes that can be quoted, priced and sold as a whole. Example: a mobile phone, hands free and car charger could be sold as a PHONE KIT. The 3 individual stock codes are listed as components of the PHONE KIT. You need only nominate PHONE KIT in a quote or Job to sell the 3 products together.

Kit contents can be adjusted 'on the fly', allowing you to modify the combination and quantity of stock codes in the kit, from within a Quote or Job. **On Invoice** (sell a Kit), Jim2 depletes the individual components you selected in the kit.

Individual components sold in a 'Dynamic Kit' can be returned/ credited. Example: return the car charger for credit, but retain the other products.

Packaging

A Package is similar to a 'kit' in that it contains a combination of stock codes. The **packaging process** (the time & resources used to combine the contents) is managed using Jim2 status. On completion of the packaging process, the **Package itself becomes stock on hand** and the Package 'contents' are depleted – prior to Sale. Example: system builds or light manufacturing.

Packages can be '**unpacked**' to return their content to stock on hand. If you sell a Package, the individual components can be returned/ credited.

Creating the Package Stock record

Add a new stock record, and select TYPE = Packaging from the stock Type dropdown.

Select the Stock GL Group, give the Package an appropriate description, add selling Price Levels and Stock Group as required.

Click on the Packaging Tab and enter the contents (stock codes and quantity) that make up the final package.

	PL	Stock Code	Description	Unit	Qty.	Price TF	Price TP	Tax	Use Price	Hide	Total
▶ 1		NOKIA.8510 ...	Nokia 8510 mobile phone	UNIT	1	0.00	0.00		<input type="checkbox"/>	<input type="checkbox"/>	0.00
2		HANDS.FREE ...	Hands Free set for mobile phone	UNIT	1	0.00	0.00		<input type="checkbox"/>	<input type="checkbox"/>	0.00
3		CAR.CHARGER ...	Car Charger for mobile phone	UNIT	1	0.00	0.00		<input type="checkbox"/>	<input type="checkbox"/>	0.00

In the above example we have included a depleting stock with a 'serial number on purchase' (NOKIA.8510) to show how serialised product acts within a package.

NOTE: The rules for USE PRICE and HIDE are identical to those in Kitting. Please refer to the chapter in Jim2 Help (F1) for [Creating a Kit](#).

The Packaging session



Click on the Packaging Icon in the sidebar to open the **Packaging List** screen. If you click RUN, the list will show all of the previous Packaging sessions, The Packaging session List can be filtered/ advanced filtered using the search fields such as serial number, pack number etc.

When you are ready to commence a Packaging session, click the **ADD** button to open a new Packaging session. Type the **Package stock code** into the package field, and then type the **Quantity** of packages you intend to make in this session.

Adding new Package Session 2

Session# 2 Date 17/06/2005 Status Booked Location NSW Name SYS

Package PHONE.PACK Promotional Mobile Phone package Qty 5

Stock Code	Description	Serial	Unit	Qty

Pack Unpack Cancel Save Save & Close Total Created 0

Package

Clicking Enter twice, or select the **PACK** button to activate the Create Packages screen.

NOTE: If you have any stock which require serial numbers or attributes, the appropriate selection screens will pop up automatically for the stock. Select/scan the serial numbers being used in the package and click OK.

Serial # for 'NOKIA.8510'

Search

Num	Serial
1	1000991
2	1000992
3	1000993
4	1000994
5	1000995
6	1000996

Select All Unselect All

Serial# entered: 1 of 1 - committed on other Job(s)

OK Cancel

Editing Package

Session# 2

Package PHONE.PACK

Method Individual packaging

Stock Code	Description
1	NOKIA.8510
2	HANDS.FREE
3	CAR.CHARGER

Default package stock

Packaging 5 of 5

Unit	Qty
UNIT	1
UNIT	1
UNIT	1

Pack Unpack Cancel Save Save & Close Total Created 4

Package

When the **status** of the Adding new Package Session is **BOOKED**, stock quantity of contents that make up the package is taken out of stock, even though the packages are not yet available for sale. This gives you time to actually package the products together.

Editing Package Session 2

Session# 2 Date 17/06/2005 Status **FINISH** Location NSW Name SYS

Package PHONE.PACK Promotional Mobile Phone p Booked CANCEL Qty 5

Stock Code	Description	Unit	Qty
Pack #10011			
NOKIA.85	Nokia 8510 mobile phone	1000987	1
HANDS.FR	Hands Free set for mobile phone		1
CAR.CHAF	Car Charger for mobile phone		1
Pack #10012			
NOKIA.85	Nokia 8510 mobile phone	1000988	1
HANDS.FR	Hands Free set for mobile phone		1
CAR.CHAF	Car Charger for mobile phone		1
Pack #10013			
NOKIA.85	Nokia 8510 mobile phone	1000989	1
HANDS.FR	Hands Free set for mobile phone		1
CAR.CHAF	Car Charger for mobile phone		1
Pack #10014			
NOKIA.85	Nokia 8510 mobile phone	1000990	1
HANDS.FR	Hands Free set for mobile phone		1
CAR.CHAF	Car Charger for mobile phone		1
Pack #10016			
NOKIA.85	Nokia 8510 mobile phone	1000991	1
HANDS.FR	Hands Free set for mobile phone		1
CAR.CHAF	Car Charger for mobile phone		1

Pack Unpack Cancel Save Save & Close Total Created 5

Changing the status of the Package Session to **FINISH** and **saving** will put the quantity of packages into stock. Each Package will be identified with a **unique Pack#**.

NOTE: Jim2 includes a PACK STICKER report that is scripted to print by session. These stickers can be 'scanned' in Jobs to select a specific package when selling.

Now the Package stock record will show quantity on hand in the Qty by Location field.

Viewing Stock - PHONE.PACK

Stock Details Locations Packaging

Stock Code PHONE.PACK Type Packaging GL Group Peripherals Active

Desc Promotional Mobile Phone package

Measure Unit Quantity Unit Description

UNIT 1

This stock I

Buy in Unit Tax Manufacture

Sell in UNIT G 10 % Service

Branch	Location Bin	Qty on Hand	Committed	Available	BackOrder
	NSW	5	0	5	0

Serial# Attributes

not required not required

on purchase on purchase

on sell on sell

Groups No groups assigned

Last Cost 157.0000 Last COG 157.0000 Max COG 0.0000 Avg COG (PO) 0.0000

Avg. Cost 157.0000 Avg. COG 157.0000 RRP 0.00

Calc prices for UNIT

Price Level	Price Calc Method	Pcnt %	Price TF	Price TP	> Qty	Pcnt %	Price TF	Price TP	> Qty	Pcnt %
4-Retail	Fixed Price	0.00	453.64 ...	499.00						

Create Similar Edit Close

Pricing Stock On Hand Stats Buying Vendors Transactions

The quantity of each of the contents has been also been reduced. The 'Packaged' column in the content stock record shows how many units are sitting in un-sold Packages - just in case you need to un-pack to recover stock back.

The screenshot shows the 'Viewing Stock - NOKIA.8510' window. It includes fields for Stock Code (NOKIA.8510), Type (Depleting), and GL Group (Peripherals). Below this is a 'Qty by Locations' table and a main transaction grid.

Branch	Location	Bin	Qty on Hand	Committed	Available	BackOrder	Packaged
NSW			5	0	5	0	5

Tran#	Date	Type	Ref#	Serial	Loc.	Pack#	Qty	Qty Bal	PO#	POLine#	Job#	Lin
886	17/06/2005	Purchase	34	1000996	NSW		1	1	34	1		
885	17/06/2005	Purchase	34	1000995	NSW		1	1	34	1		
884	17/06/2005	Purchase	34	1000994	NSW		1	1	34	1		
883	17/06/2005	Purchase	34	1000993	NSW		1	1	34	1		
882	17/06/2005	Purchase	34	1000992	NSW		1	1	34	1		
881	17/06/2005	Purchase	34	1000991	NSW	10016	1	1	34	1		
880	17/06/2005	Purchase	34	1000990	NSW	10014	1	1	34	1		
879	17/06/2005	Purchase	34	1000989	NSW	10013	1	1	34	1		
878	17/06/2005	Purchase	34	1000988	NSW	10012	1	1	34	1		
877	17/06/2005	Purchase	34	1000987	NSW	10011	1	1	34	1		

Selling Packages

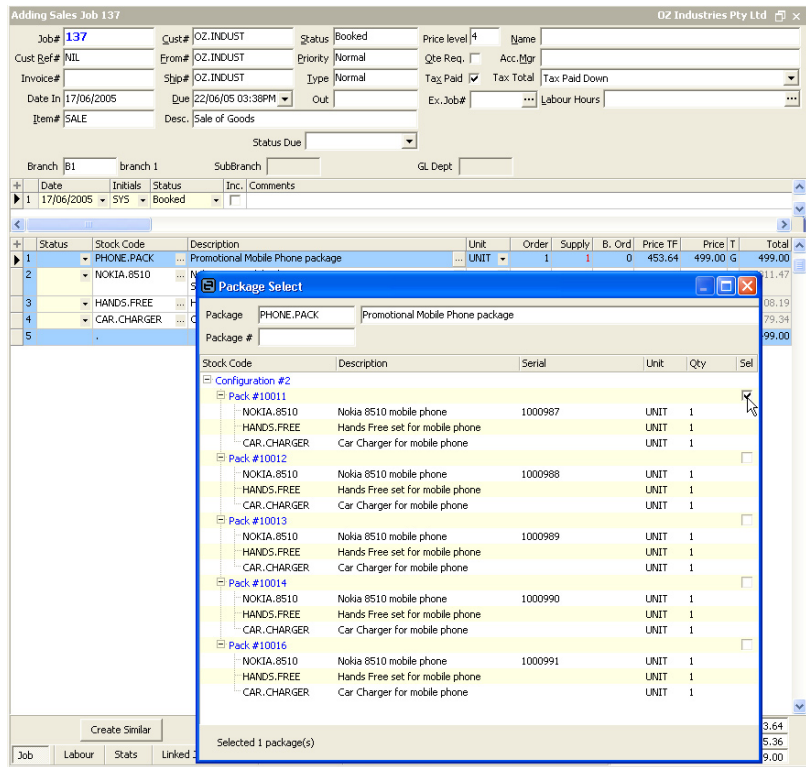
Add your sale job as per normal, and add the Package stock code to the stock grid. Type in the quantity of Packages (ordered by customer), and click the browse button [...] in the description field of the Package header to select/scan which specific Package #'s you are selling.

The screenshot shows the 'Adding Sales Job 137' window. It includes fields for Job# (137), Cust# (OZ.INDUST), Status (Booked), and Price level (4). Below this is a grid of line items.

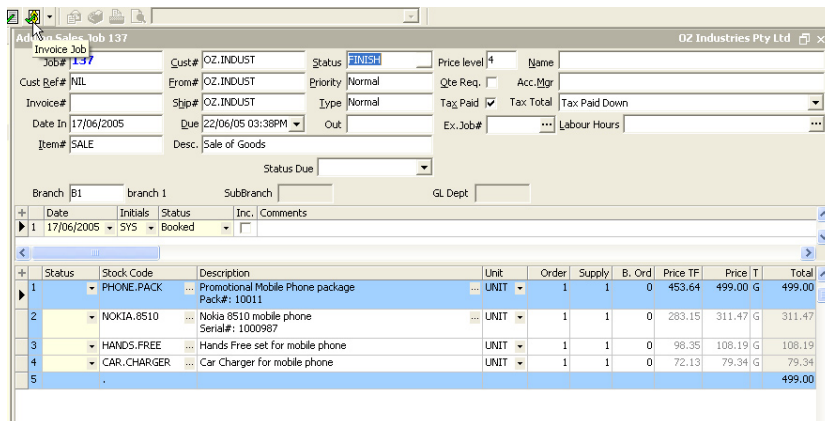
+	Date	Initials	Status	Inc.	Comments
▶ 1	17/06/2005	SYS	Booked		

+	Status	Stock Code	Description	Unit	Order	Supply	B. Ord	Price TF	Price T	Total
▶ 1		PHONE.PACK	Promotional Mobile Phone package	UNIT	1	1	0	453.64	499.00 G	499.00
▶ 2		NOKIA.8510	Nokia 8510 mobile phone	UNIT	1	1	0	283.15	311.47 G	311.47
▶ 3		HANDS.FREE	Hands Free set for mobile phone	UNIT	1	1	0	98.35	108.19 G	108.19
▶ 4		CAR.CHARGER	Car Charger for mobile phone	UNIT	1	1	0	72.13	79.34 G	79.34
▶ 5										499.00

The Package select screen will pop up. Scan or key the # into the Package# field, or use the 'Show all packages' tick box and tick your selection in the 'Select' field (as below).



NOTE: Choosing a specific package/s will automatically pickup the serial numbers of (serialised) stock used in the package.
OK to continue. The Job will now show the (selected) Pack# in the (blue) Package header.



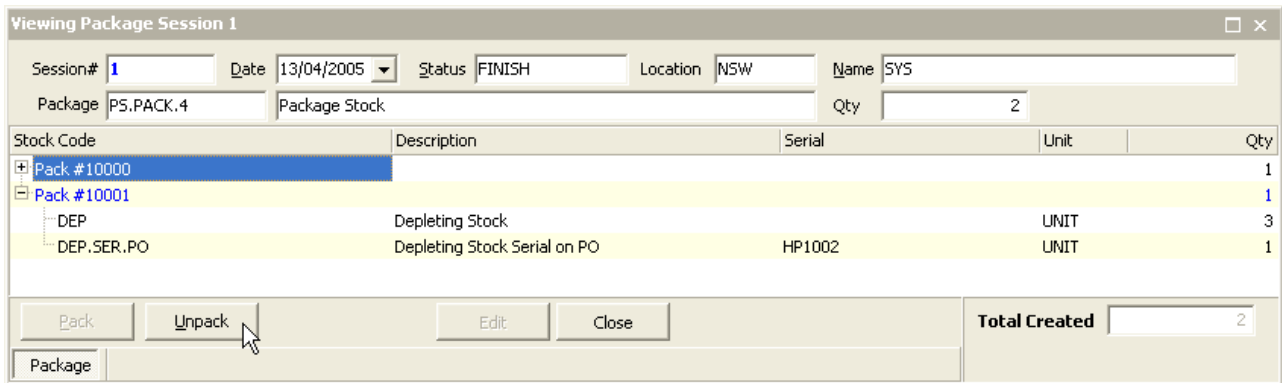
Invoice the job as per normal.

Stock Transferring Packs

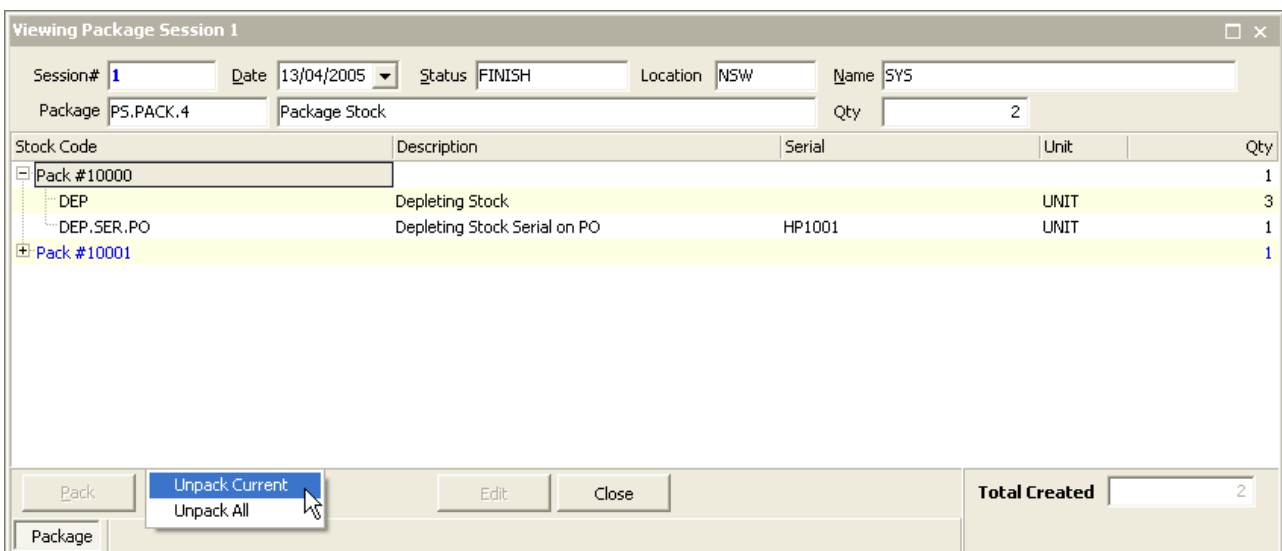
Packaged stock can be stock transferred in the same way as Depleting Stock. The Stock Transfer will request Pack# (just as selling does). Refer to the section on Stock Transfers in the Help File (F1) for additional information.

Unpacking a Package

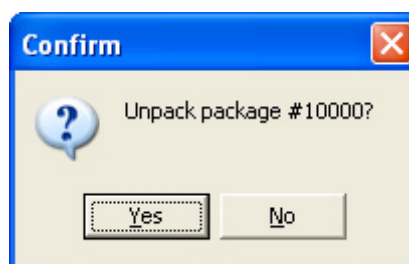
There may be an occasion when you want/need to sell a component from a pre-packaged stock on hand. We allow you to **unpack** either an entire packaging session, or just one package from a packaging session.



Use the **Packaging List** to find then (double click) open the Packaging session containing the package(s) you wish to unpack,



You must select to either **Unpack Current** (the selected package) or **Unpack All** packages made in that session. You will then see the confirmation message. Click **YES** to unpack. The package contents are now returned to stock on hand count, ready to sell.



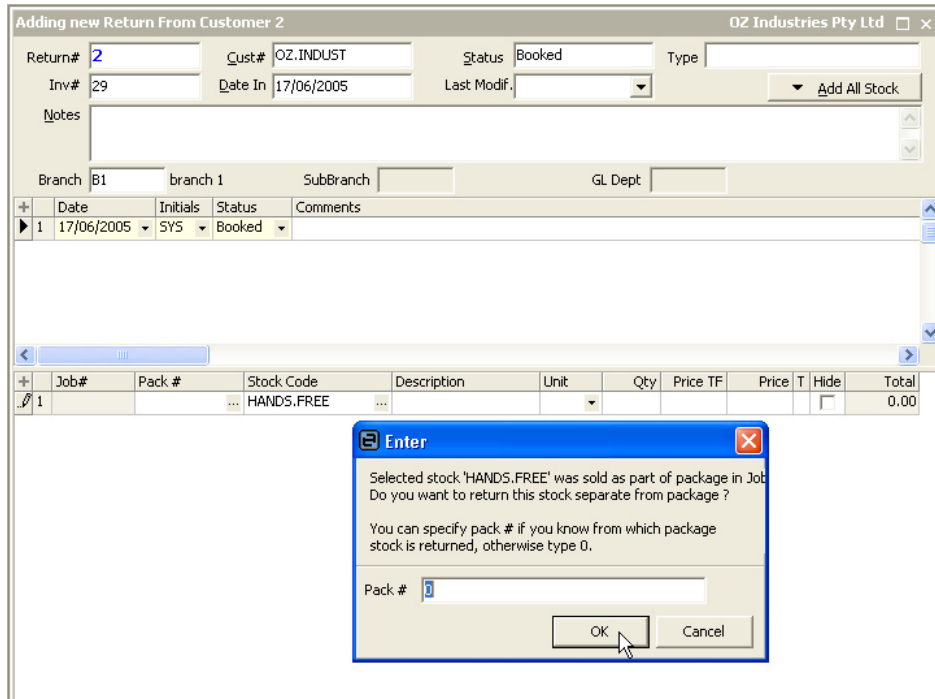
Returning Package from Customer

There are two options for customers to return packages.

1. Part of a package

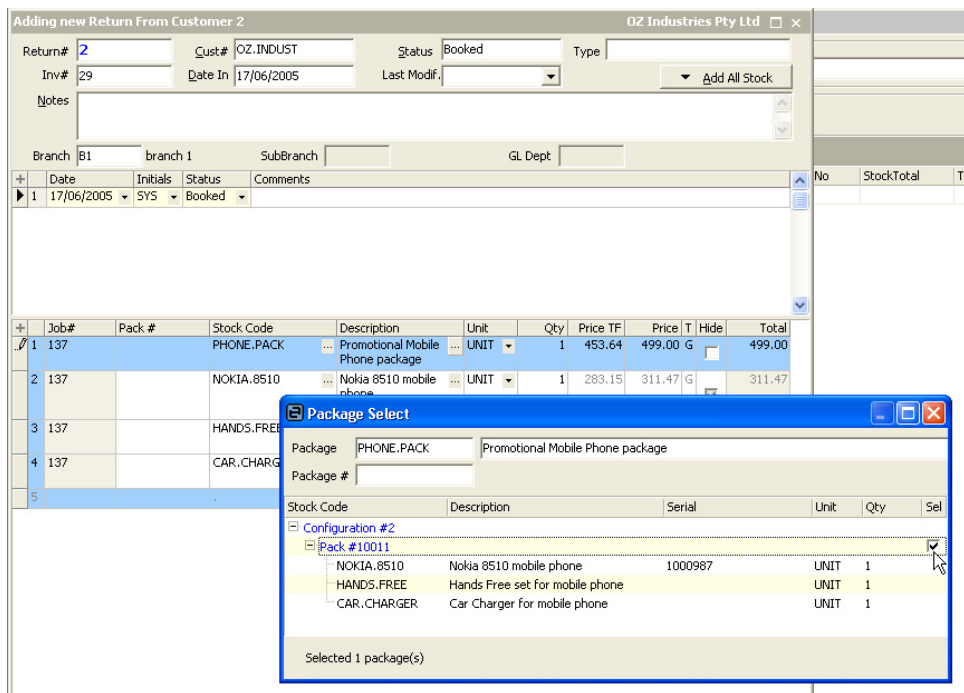
To return part of a package, simply type the stock code of the component/s being returned into the Return From Customer screen. If the components being returned are serialised, Jim2 will not request a package number. If the components were not serialised, you will then be asked to specify which package the stock was sold from; if this is known, enter in the value. If not, leave as zero.

NOTE: Once **part** of a package has been returned, the entire package can (logically) no longer be returned - only the remaining parts.



2. A full package

To return a full package, enter the package stock code into a RFC (Return from Customer). It will require the selection of the appropriate package, in the same way as entering the package onto a job.



IMPORTANT: There are a range of security options around packaging to allow you to control the use of this new feature. ALL new security settings are ACTIVE/ ENABLED in ALL SECURITY GROUPS until edited

New – Debtor/ Creditor Tree Grids

Yes, we heard you! It's finally arrived – changes to the Debtors and Creditors grids to make viewing, sorting and searching much easier!

The new grids now use a tree formation to show/hide allocations, which shows the transactions much more clearly. You can also SORT the transactions by invoice number, date, amount and in the case of Creditors you can also sort by the FROM# and also the PO# columns.

Purchase Orders List												<input type="checkbox"/> Include fully paid Purchases	Change Filter
Payment Approved	Vend. Inv#	From #	Purchase#	Date	Exchange Rate	Purchase Amt	Paid Amt	Discount	Account Fee Discount	Paid Now	Balance Due	Date	▲
▶	00000404	STRATEGIC	7791	31/03/2004		14300.00	0.00				14300.00	30/04	
	257312	CALIDAD	7861	20/07/2004		3.85	0.00				3.85	31/08	
	7465456	TEHPACIF	7921	03/10/2003		156.04	0.00				156.04	30/11	
	24052288	ACER	8006	25/05/2004		10181.60	0.00				10181.60	30/06	
	R5464048	CANON	8090	29/05/2004		1874.40	0.00				1874.40	30/06	
	24049815	ACER	8191	20/05/2004		167.20	0.00				167.20	30/06	
	R5464218	CANON	8205	29/05/2004		155.10	0.00				155.10	30/06	
	24055853	ACER	8209	04/06/2004		797.50	0.00				797.50	31/07	
	30-A0564-11	INGRAMMIC	8215	17/06/2004		495.01	0.00				495.01	31/07	
	24057321	ACER	8220	10/06/2004		54.40	0.00				54.40	31/07	
	24056042	ACER	8259	04/06/2004		244.20	0.00				244.20	31/07	
	110295	BLUE.CHIP	8271	01/06/2004		117.70	0.00				117.70	31/07	
	24055923	ACER	8275	04/06/2004		2640.00	0.00				2640.00	31/07	
	R5483760	CANON	8276	02/06/2004		2392.06	0.00				2392.06	31/07	
	24055764	ACER	8283	04/06/2004		871.20	0.00				871.20	31/07	
	R5485070	CANON	8286	03/06/2004		563.20	0.00				563.20	31/07	
	24056517	ACER	8287	08/06/2004		7920.00	2539.14				5380.86	31/07	
	111047	BLUE.CHIP	8289	01/06/2004		496.10	0.00				496.10	31/07	
	879913	LEGENDPER	8292	01/06/2004		204.60	0.00				204.60	31/07	
	111497	BLUE.CHIP	8301	07/06/2004		3392.40	0.00				3392.40	31/07	

If you click on the + sign in the grid, it will display all the related transactions and allocations in a tree layout, from either the Allocate Payments Tab or the Payments Tab.

Purchase Orders List												<input type="checkbox"/> Include fully paid Purchases	Change Filter
Payment Approved	Vend. Inv#	From #	Purchase#	Date	Exchange Rate	Purchase Amt	Paid Amt	Discount	Account Fee Discount	Paid Now	Balance Due	Date	▲
	24057321	ACER	8220	10/06/2004		54.40	0.00				54.40	31/07	
	24056042	ACER	8259	04/06/2004		244.20	0.00				244.20	31/07	
	24055923	ACER	8275	04/06/2004		2640.00	0.00				2640.00	31/07	
	24055764	ACER	8283	04/06/2004		871.20	0.00				871.20	31/07	
	24056517	ACER	8287	08/06/2004		7920.00	2539.14				5380.86	31/07	
		ACER		21/07/2004			1934.14						
		ACER		21/07/2004			208.02						
		ACER		21/07/2004			20.78						
		ACER		21/07/2004			376.20						
	24056919	ACER	8339	09/06/2004		1934.14	0.00				1934.14	31/07	

Payments List										<input checked="" type="checkbox"/> Include fully allocated Payments	Change Filter
Pay#	Document#	Date	Type	Payment By	Exchange Rate	Amount	Amount Balance	Comment	▲		
▶	1727	8823	19/07/2004	Credit	Returns	14.85	-14.85	Expense Order #8823			
	1726	8804	06/05/2004	Credit	Returns	10.89	-10.89	Expense Order #8804			
	1725		21/07/2004	Credit	Cheque	15002.40	0.00	Cheque #Auto#761,Purchase Order #7693 (Credit Note#608867)			
	1724	276	07/07/2004	Credit	Returns	1934.14	0.00	Purchase Order #8145 (Credit Note#74005044)			
		8287	21/07/2004	Payment	Returns	1934.14	0.00	Purchase Order #8145 (Credit Note#74005044)			
	1722	275	14/07/2004	Credit	Returns	208.02	0.00	Purchase Order #7693 (Credit Note#608867)			
	1716		14/07/2004	Credit	Cheque	6235.78	0.00	Cheque #759			

If you click on the From# header, the transactions will be sorted by the actual supplier. Likewise if you click on the Vend Inv# header the transactions will now be sorted by vendor invoice number.

Purchase Orders List												<input type="checkbox"/> Include fully paid Purchases	Change Filter
Payment Approved	Vend. Inv#	From #	Purchase#	Date	Exchange Rate	Purchase Amt	Paid Amt	Discount	Account Fee Discount	Paid Now	Balance Due	Date	
<input checked="" type="checkbox"/>	24057321	ACER	8220	10/06/2004		54.40	0.00				54.40	31/07	
<input checked="" type="checkbox"/>	24056042	ACER	8259	04/06/2004		244.20	0.00				244.20	31/07	
<input checked="" type="checkbox"/>	24055923	ACER	8275	04/06/2004		2640.00	0.00				2640.00	31/07	
<input checked="" type="checkbox"/>	24055764	ACER	8283	04/06/2004		871.20	0.00				871.20	31/07	
<input checked="" type="checkbox"/>	24056517	ACER	8287	08/06/2004		7920.00	2539.14				5380.86	31/07	
<input checked="" type="checkbox"/>	24056919	ACER	8339	09/06/2004		1934.14	0.00				1934.14	31/07	
<input checked="" type="checkbox"/>	24057402	ACER	8391	10/06/2004		603.57	0.00				603.57	31/07	
<input checked="" type="checkbox"/>	24061840	ACER	8402	23/06/2004		52.67	0.00				52.67	31/07	
<input checked="" type="checkbox"/>	24059090	ACER	8407	16/06/2004		2063.17	0.00				2063.17	31/07	
<input checked="" type="checkbox"/>	24058092	ACER	8408	11/06/2004		3960.00	0.00				3960.00	31/07	
<input checked="" type="checkbox"/>	24058450	ACER	8410	15/06/2004		1595.00	0.00				1595.00	31/07	
<input checked="" type="checkbox"/>	24062868	ACER	8471	28/06/2004		1623.60	0.00				1623.60	31/07	
<input checked="" type="checkbox"/>	24059714	ACER	8486	17/06/2004		4298.29	0.00				4298.29	31/07	
<input checked="" type="checkbox"/>	24070146	ACER	8657	20/07/2004		748.00	0.00				748.00	31/08	
<input checked="" type="checkbox"/>	24067171	ACER	8666	08/07/2004		173.71	0.00				173.71	31/08	
<input checked="" type="checkbox"/>	24070165	ACER	8740	20/07/2004		52.67	0.00				52.67	31/08	
<input checked="" type="checkbox"/>	00161965	AMICROE	8452	16/06/2004		276.10	0.00				276.10	31/07	
<input checked="" type="checkbox"/>	00162709	AMICROE	8510	22/06/2004		140.80	0.00				140.80	31/07	
<input checked="" type="checkbox"/>	00162710	AMICROE	8523	23/06/2004		137.50	0.00				137.50	31/07	
<input checked="" type="checkbox"/>	00163713	AMICROE	8618	01/07/2004		213.40	0.00				213.40	31/08	
<input checked="" type="checkbox"/>	00165128	AMICROE	8720	14/07/2004		380.60	0.00				380.60	31/08	

For those sites using Central Billing from suppliers, your Creditor management has just become much more user friendly!

Inactive transactions (reversals and unprints etc) are now 'greyed' visually indicating that they are inactive but maintaining the audit log.

NEW - Email Comments from PO's

Another new feature directly from the 'Wishlist' - you all like to email comments from jobs and notes so much, now you can email comments from PO's as well.

Adding Purchase Order 83 Computer Wholesalers

PO# Vend# Status Tax Total

Our Ref# From# Type Freight to Cost By

Ship#

Date In Date Due Vend Inv Date

BackOrd# ... Orig.PO# ... Vend Inv# Tax Paid

Withhold GST

Notes

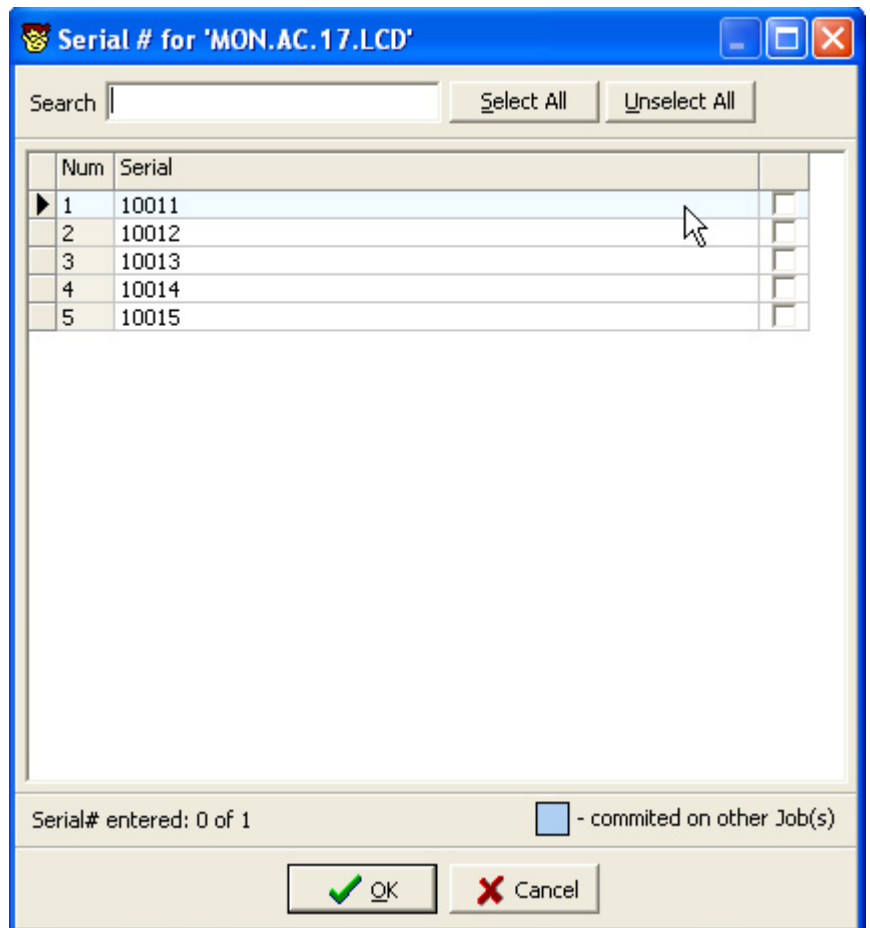
Branch Sydney Branch SubBranch GL Dept

+	Date	Initials	Status	Comments
1	09/05/2005	SYS	Booked	Agreed that the printers will be delivered on Friday 13 May

- Add new
- Delete
- Send comment via email
- Send all comments via email
- Grid Columns...

NEW - Flag serial numbers as committed on Jobs

In the Serial# Select pop up, we now identify serial numbers that have already been committed on other jobs, by highlighting the background a light blue colour.



NEW – Stock Procurement



To help sites manage Just In Time stock control, we have added a new feature to Jim2 called Stock Procurement. This allows you to manage your stock levels based on **usage** and **fixed min quantity** levels.

The Procurement feature works by creating Purchase Orders and stock Transfers in a similar way to the 'Auto-Create Purchase Order' session, however calculations are based on individual Stock usage patterns, rather than Stock required for specific Jobs. The Procurement feature calculates **how many of which** products need ordering, based on your choice of:

- Minimum Quantity on Hand by Location
- The number of 'days' this minimum stock quantity represents at each location
- Re-Order Quantity
- Stock availability in other locations (able to be transferred, rather than ordered)
- Average sold per day for previous 'x' days or during the same period last year
- X% increase on previous stock level
- Vendor Lead Time

Jim2 Procurement will identify the Stock that requires re-order or transfer based on your calculation choices, and presents a 'recommendation' ORDER/ TXFR QTY based on:

- Quantity on Hand
- Quantity allocated on Jobs
- Quantity already on Purchase Order (on status of ordered)
- Quantity available at other (bulk) locations that could be transferred inwards

Stock Procurement

Procurement: Order and Transfer

For Location: NSW

Ship Location: NSW

Bulk location:

Transfers from bulk only:

Stock: Stock Code, GL Group, Attributes, Description, Groups

Vendor: Vendor, Stock Code, Groups

Stock Code	Description	Unit	Qty On Hand	Qty On Jobs	Qty On Order	Min Qty Required	Reorder Qty	Order / Txfr Qty	Add to existing PO	Supplier	Price Tax Free	Order
CDROM.EXP	Express Infra CDROM 52x	UNIT	0	5	0	0	0	5		TECHDIST	38.00	<input checked="" type="checkbox"/>
GSP1600.R	GSP1600 dual mode Satellite/CDMA phone	UNIT	0	1	0	0	0	1			0.00	<input checked="" type="checkbox"/>
MB	Motherboard	UNIT	10	129	20	10	5	109		JL.ELEC	112.00	<input checked="" type="checkbox"/>
MON.LCD.17	P2 LCD 17" Monitor	UNIT	0	8	4	0	0	4		COMP.WHOLE	425.00	<input checked="" type="checkbox"/>

You can edit the calculated quantity in the Order/Transfer column if required. Jim2 will flag quantities in red if you edit the quantity to be GREATER than the calculated quantity.

Stock Procurement

Procurement: Order and Transfer

For Location: NSW

Ship Location: NSW

Bulk location:

Transfers from bulk only:

Stock: Stock Code, GL Group, Attributes, Description, Groups

Vendor: Vendor, Stock Code, Groups

Stock Code	Description	Unit	Qty On Hand	Qty On Jobs	Qty On Order	Min Qty Required	Reorder Qty	Order / Txfr Qty	Add to existing PO	Supplier	Price Tax Free	Order
CDROM.EXP	Express Infra CDROM 52x	UNIT	0	5	0	0	0	5		TECHDIST	38.00	<input checked="" type="checkbox"/>
GSP1600.R	GSP1600 dual mode Satellite/CDMA phone	UNIT	0	1	0	0	0	1			0.00	<input checked="" type="checkbox"/>
MB	Motherboard	UNIT	10	129	20	10	5	150		JL.ELEC	112.00	<input checked="" type="checkbox"/>
MON.LCD.17	P2 LCD 17" Monitor	UNIT	0	8	4	0	0	4		COMP.WHOLE	425.00	<input checked="" type="checkbox"/>

Using the ORDER button, Jim2 will then produce the Purchase Orders and Stock Transfers required to fulfil your procurement requirements.

Purchase Order List - 1

PO# [] Vend# [] Ship# [] Vend Inv# [] Active

Our Ref# [] From# [] Status [] Type [] Received

Finished

Drag a column header here to group by that column

PO#	Status	Type	Vend#	From#	Vend Inv#	Date	Our Ref#	Total Due	Ship#	PrevPONo	Received
27	Booked	Order	TECHDIST	TECHDIST		15/06/2005		209.00	20/06/2005	SYS	
28	Booked	Order	COMP.WHOLE	COMP.WHOLE		15/06/2005		1870.00	20/06/2005	SYS	
29	Booked	Order	JL.ELEC	JL.ELEC		15/06/2005		18480.00	20/06/2005	SYS	

Changes to existing Stock records

Only stocks which are set to 'calculated' will be included in the Procurement calculation. On upgrade to version 2.14, your existing stock records that **already** have a MIN QTY and/or RE-ORDER QTY set will automatically be set to 'calculated' and updated as shown below.

NOTE: Existing Minimum Quantity will be allocated to the 'most popular' Stock Location (the location with the most Users).

Location	Bin	Description	Min Qty	Days Supply
NSW			10	
QLD				
VIC				

Procurement

Min Qty per Location method: Calculated

Daily Avg Sold per day based on: last [] days

Add extra [] % to calculated Qty

Re-order Qty: 5.00

For each location you can then set:

- **Min Qty** – The minimum number of units to be kept in stock, and / or
- **Days Supply** – The number of days worth of stock you wish to keep on hand

Location	Bin	Description	Min Qty	Days Supply
NSW			20	30
QLD			5	30
VIC			5	60

Procurement

Min Qty per Location method: Calculated

Daily Avg Sold per day based on: last [30] days

Add extra [] % to calculated Qty

Re-order Qty: 5.00

When calculating the suggested movement of stock, Procurement considers the requirements based on the greater of the two values.

The **daily average sold per day can be based on:**

- **Last # days** – nominate how many days previous selling transactions you would like used (eg: 30)
- **Current month last year** – The current month in the previous year (recommended for seasonal goods)

IMPORTANT: When upgrading to version 2.14, historic stock transactions ARE taken into account in Daily Average Sold calculations. This ensures Procurement (based on this calculation method) is immediately relevant for existing sites.

An **additional percentage** can be added to increase the calculated level, allowing adjustment for growth.

The **Re-Order Quantity** is the minimum amount that will be ordered if an order is to be placed. This ensures that you can take advantage of quantity price breaks etc offered from your suppliers.

A new field '**Lead Time in Days**' has been added to the Vendor tab of the stock screen. Jim2 will consider lead time (number of days) with respect to Days Supply, and increase the required stock to allow for the shipment to arrive from your suppliers.

Rank	Vendor	Vendor Stock	Vendor List Price	Vendor Disc %	Vendor Last Cost	Estimate Pcnt	Extra Dollars	Estimated Cost	Last Updated	Due Days	Qty in Stock	Lead Time in Days
1	COMP.WHOLE	XYZ	2.48		2.4800			2.4800	15/06/2005			2
2	TECHDIST	CAR001	2.65		2.6500			2.6500	15/06/2005			1
3	JL.ELEC	123456	2.89		2.8900			2.8900	15/06/2005			5

Create Similar **X** Cancel Save Save & Close

Pricing Stock On Hand Stats Buying Vendors Transactions

IMPORTANT: Changing the method to 'none' will EXCLUDE specific stock from Procurement sessions.

Changes to Stock Location setup

Location	Description	Branch	Branch Def.	Bulk Location	Exclude from Procurement	Active
NSW	NSW Office		<input type="checkbox"/>	<input type="checkbox"/>	<input type="checkbox"/>	<input checked="" type="checkbox"/>
NSWB	NSW Bulk Warehouse		<input type="checkbox"/>	<input checked="" type="checkbox"/>	<input type="checkbox"/>	<input checked="" type="checkbox"/>
QLD	Queensland Office		<input type="checkbox"/>	<input type="checkbox"/>	<input type="checkbox"/>	<input checked="" type="checkbox"/>
TXFR	Stock in transit		<input type="checkbox"/>	<input type="checkbox"/>	<input type="checkbox"/>	<input checked="" type="checkbox"/>
VIC	Victoria Office		<input type="checkbox"/>	<input type="checkbox"/>	<input type="checkbox"/>	<input checked="" type="checkbox"/>

For Procurement functionality, please nominate the following against your existing (and any new) Stock Locations:

'Bulk Location' Stock Locations can be set to act as 'bulk locations'. The Procurement calculation looks first to stock levels in BULK locations to calculate if transfer of surplus Stock (from Bulk) can be used to fulfil stock requirements in other (non bulk) locations.

'Exclude from Procurement' Stock locations can be 'excluded' from Procurement calculations using this flag. This is normally faulty Stock locations (RFC etc).

Using the Stock Procurement feature

Stock Code	Description	Unit	Qty On Hand	Qty On Jobs	Qty On Order	Min Qty Required	Reorder Qty	Order / Txfr Qty	Add to existing PO	Supplier	Price Tax Free	Order

Procurement is RUN to calculate which and how many of each stock is required to fulfil your current needs, based on your preferred calculation parameters set in individual Stock records. Jim2 will auto-create the Purchase Orders and/or Stock Transfers to match the Procurement session when you choose ORDER.

Stock Procurement

Procurement: Order and Transfer (selected), For Location: QLD, Ship Location: , Bulk location: , Transfers from bulk only:

Stock: Stock Code: , GL Group: , Attributes: ... OR, Description: , Groups: ... OR

Vendor: Vendor: , Stock Code: , Groups: ... OR

Stock Code	Description	Unit	Qty On Hand	Qty On Jobs	Qty On Order	Min Qty Required	Reorder Qty	Order / Txfr Qty	Add to existing PO	Supplier	Price Tax Free	Order
MB	Motherboard	UNIT	98	100	0	5	5	0		JL.ELEC	112.00	<input checked="" type="checkbox"/>
	Transfer from NSW	UNIT	427					7				<input checked="" type="checkbox"/>

Order Value: 0.00

Buttons: Select All, Unselect All, Run, Cancel, Order

NOTE: You may filter the Procurement session to specific combinations of Stock, Stock GL Group, Stock Attributes and Stock Groups, as well as specific Vendor (as shown in the Procurement list)

The following Procurement options can also be selected:

- **Order and Transfer** (default) / **Transfer only** / **Order only** – The type of movement/documents which can be generated by the Procurement session
- **For Location:** The location which the stock is required for, eg if you wish to order stock for your Sydney office, select this location
- **Ship Location:** The location where the stock should be shipped to. Your business may receive all stock to a central warehouse before replenishing the outlying locations.
- **Bulk Location:** The first bulk location to consider for stock transfers, this bulk location will be considered and then the other available locations (in alphabetical order).

Stock Procurement

Procurement: Order only (selected), Order and Transfer, Transfer only, Ship location

Stock: Stock Code: , GL Group: , Attributes: ... OR, Description: , Groups: ... OR

Vendor: Vendor: , Stock Code: , Groups: ... OR

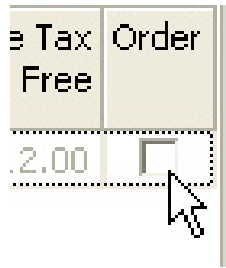
Stock Code	Description	Unit	Qty On Hand	Qty On Jobs	Qty On Order	Min Qty Required	Reorder Qty	Order / Txfr Qty	Add to existing PO	Supplier	Price Tax Free	Order
MB	Motherboard	UNIT	98	100	0	5	5	7		JL.ELEC	112.00	<input checked="" type="checkbox"/>

Order Value: 784.00

Buttons: Select All, Unselect All, Run, Cancel, Order

When you run the Procurement session it will show you a recommended movement of stock quantity in the ORDER/ TXFR QTY column.

You can EDIT the quantity in the ORDER/ TXFR QTY, or 'untick' the Order column to exclude specific product from the auto-generated Purchase Orders.



We recommend you monitor and make changes at this point to ensure the calculated requirements are valid. When you select **ORDER**, Jim2 BE generates the required Purchase Orders and Stock Transfers.

NOTE: The generated Purchase Orders and Stock Transfers will be created and left on the status of BOOKED, ready to enter your normal workflow process. Purchase Orders and Stock Transfers will be updated with the following comment for your reference:

+	Date	Initials	Status	Comments
▶ 1	15/06/2005	SYS	Booked	Auto created by Stock Procurement

Recommendations

Procurement calculations are intended as a guide to stock re-ordering. We strongly encourage users to carefully monitor the suggestions from Procurement, as calculations are based on options and historic transactions set in your Jim2 database.

It is recommended you restore a 'play' database and update it to version 2.14 to gain experience with the Procurement feature before implementing it in your production database. If you are unsure how to restore a play database please contact Happen support.

If you intend to implement high level Procurement, please do not hesitate to contact Happen to arrange specific training in this area, to ensure you obtain the maximum benefit from this new feature.

NEW - Status Benchmarking

The workflow controls in Jim2 Business Engine include:

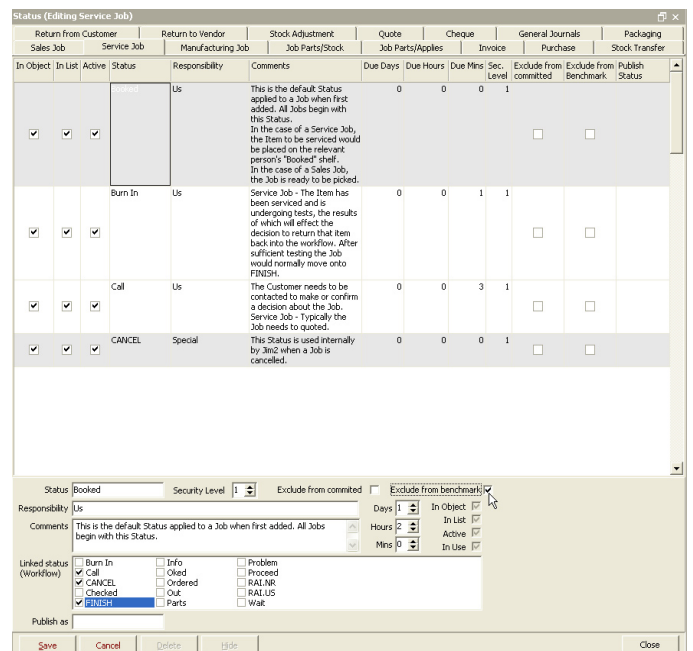
- Definable Status
- Status Due timers (days/hours/minutes)
- Strict Workflow Mapping
- Strict Workflow Security
- 'Exclude from Committed (stock)' control

and now...

- Status Benchmarking

If a Status is selected for Status Benchmarking, it can be used in reporting to correlate data relating to process bottlenecks and improvements, using real-time increments and time comparisons.

Please contact our Sales Team if you'd like to discuss report development that includes Status Benchmarking.



Jim2 Enhancements in 2.14

Support for RRP-Discount pricing on quantity price breaks

We now allow you to use the RRP-Discount pricing method for quantity price breaks.

Debtor Payments backdated warning.

Because of the implications for CASH based GST in particular, we warn you if you are backdating Debtor Payments. However, it was rather frustrating to see this message popup every time you entered a payment for 'yesterday'. We now warn you ONLY if you are backdating a payment into the previous month.

Debtor Payments no longer warn about being backdated if in current month.

4 Digits on Expense PO's.

We now give you the option to use 4 digits (decimal places) on expense PO's. To enable this, go to Tools>Options>Purchase and tick the checkbox to enable 4 digits on Expense PO's.

Changes to Debtor Statements

An * next to an amount on a statement indicates that this amount is included in the 'due now' balance on a statement.

Automated Error Reporting

We have introduced a new diagnostic tool for our Development Team – automated error reporting. If you see an Automated Error Report message appear on your screen, please ensure you select to notify Happen. This will provide important information directly to our developers, enabling a prompt resolution.

New Reports

Due to popular demand, we have included the following new reports in Jim2 Version 2.14:

All reports related to multicurrency have been updated to reflect these changes including:

- Purchase Order reports
- Account Enquiry reports
- Transaction Journal reports

Job Labour

This report shows the actual labour added to the job (via F7 in the Labour Hours field), by labour type. It is printed at a job level.

Cardfile list of inactive customers

This report shows you all customers who have NOT been within a specified date range. It is printed from a Cardfile List, you specify the date range when selecting to print the report.

Stock Sold in advance

There are instances when stock has been sold in advance. There is a new report in the Management System Report called Stock in Advance Liability which will provide exact details of all stock sold in advance.

TopX customers with previous year history

We have added a new TopX Customer Report that has the option to include previous year history. This is located in Management Reports.

Changes to Cash GST reports

For the benefit of our Jim2 sites that are on CASH GST, we have refined the Cash GST Detailed Report to give you more information. This is printed from either the Sales or Purchases Tab in GST Session.