



Installation Guide

Accounting and Workflow Software for Australian Business



Jim 2®
BUSINESS ENGINE

connecting people and business

Happen Business Pty Limited

29 - 33 Pitt Street

PO Box 126, Mortdale NSW 2223 Australia

p. +61 2 9570 4696

f. +61 2 8569 1858

www.happen.biz



Hello and Welcome to Happen Business' Jim2[®] Business Engine

Jim2[®] is powering hundreds of Aussie businesses from the Top End of Australia to the bottom of Tasmania, from the West Coast to the East Coast... and everywhere in between.

Our software is probably a bit different to anything you've seen before, and it's a whole lot better too. That's why we can give you as many Jim2[®] Customer references as you would like so you can chat to other businesses like yours about how Jim2[®] improved their entire operations.

As with all new software, we understand it can take a little while to get used to all the new functions, features and intricacies contained within a program like Jim2[®] Business Engine.

We're here to help!

If you haven't already had a demonstration of Jim2[®] with one of our friendly staff, we strongly recommend you book a FREE demo today on 02 9570 4696.

Also, if you have already had a demo, and you would like another one to further understand Jim2[®] and how it can benefit your business, please give us a call here at Happen on 02 9570 4696.

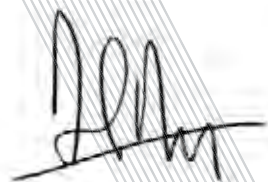
At any time whilst in the Jim2[®] program, you can press F1 to view the Help File.

If you can't find what you need, please call us on 02 9570 4696.

We also have basic tutorials available completely free of charge – please email us at info@happen.biz or just call us.

We look forward to hearing from you very soon!

Kind Regards,



Paul Berger
Managing Director
Happen Business
www.happen.biz
(p) 02 9570 4696
(f) 02 8569 1858



Jim2[®] Business Engine System Requirements

The minimum requirements for installing Jim2[®] Business Engine:

- i) Workstations: Microsoft Windows XP or above.
- ii) Microsoft SQL (2005 Express – available on Jim2[®] Installation CD).
- iii) Pentium 4 Processor PC.
- iv) 1GB RAM or above.
- v) 1280 x 1024 Resolution.
- vi) 500MB free space on Hard Drive.

If you're unsure about any of this, please call us on 02 9570 4696.

IMPORTANT: 64 bit machine Users

If you are using a 64 bit machine, you will need to install a different version Microsoft's SQL Express – the 64 bit version.

You can get the latest SQL Express version from <http://www.microsoft.com/sql>

Please choose either the 32 bit or 64 bit version to suit the computer you are installing on.

During Install, on the Database Engine Configuration page, do the following:

Click Windows & SQL Authentication Mode.

- Set the SA Password
- Click Next

After SQL Server is installed you will also need to go to the SQL Server Configuration Manager. Make sure that the following protocols are enabled:

- Shared Memory
- Named Pipes
- TCP/IP

You may also want to download and install SQL Management Studio Express in case you need to make further changes. Once you have done this, we recommend that you reboot the SQL server system before installing Jim2[®]. Again, if unsure, please call 02 9570 4696.

Jim2[®] Business Engine Installation Instructions

All these instructions can also be found in the 'Read Me' section of the CD once you have inserted it into the CD drive of your Computer.

PLEASE NOTE: These instructions were made using Microsoft Windows 7 – if you are using Windows XP or Vista, it may look slightly different, however it will still work! Any problems, please call 02 9570 4696.

Step 1 – Putting the CD into the Computer

Please insert your Jim2 CD into the CD drive of your computer.

If 'AutoPlay' is activated, you will see this screen pop up:



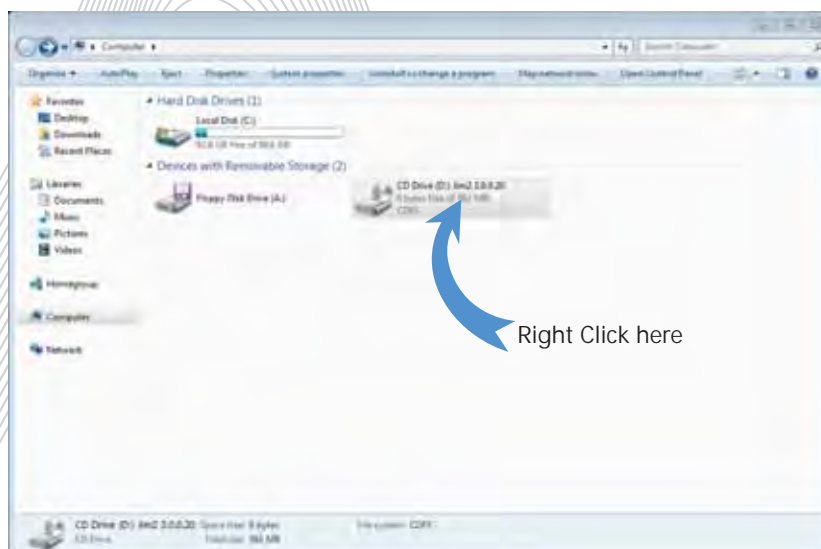
If 'AutoPlay' is not activated, this window will not automatically pop up in the middle of the screen.

Please click the bottom left hand button on your desktop.

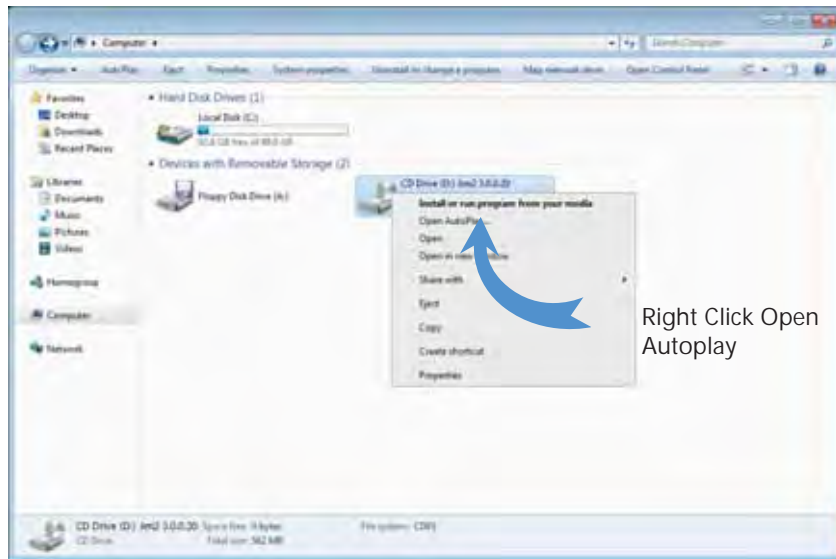
This is also called the 'Start Button'.



After clicking the 'Start Button', click on 'Computer' (or 'My Computer') on the right hand side of the menu that appears. After clicking 'Computer' (or 'My Computer'), you will see this screen:



After right-clicking, you will see this pop-up window:

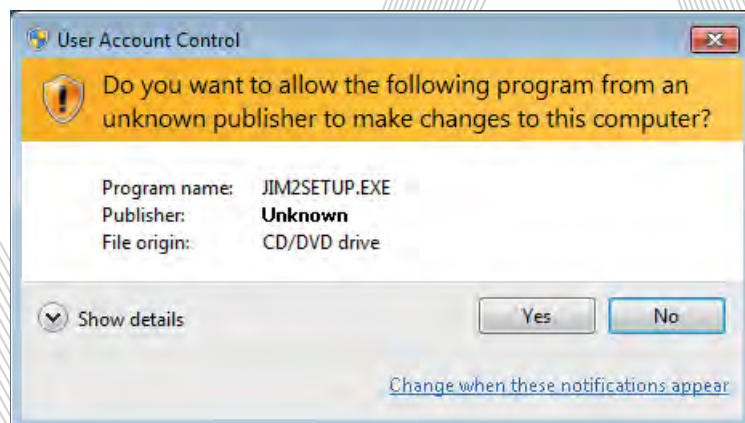


Once you have clicked on 'Open AutoPlay' you will see this window



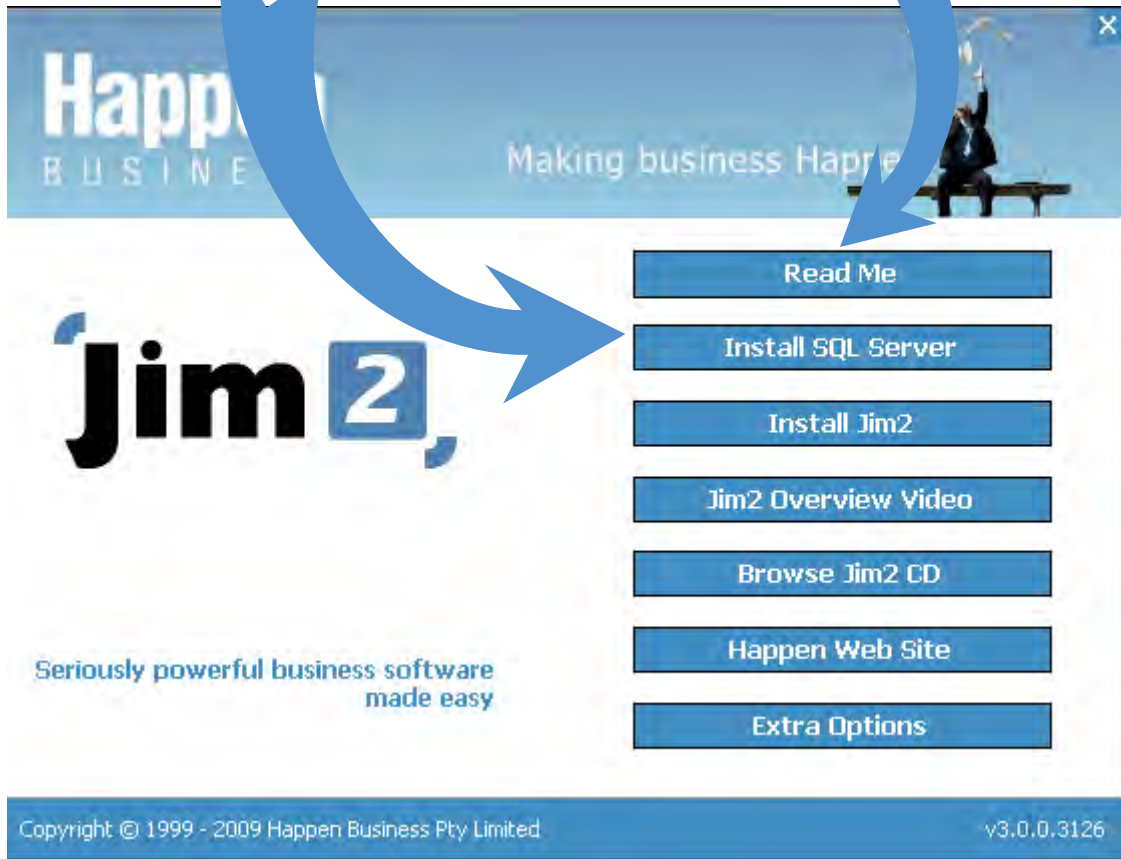
Step 2 – Installing the JIM2SETUP.EXE file

Please click on 'Run JIM2SETUP.EXE' from the Autoplay window (pictured above). You may see this screen: If you see this screen, please click 'Yes'.



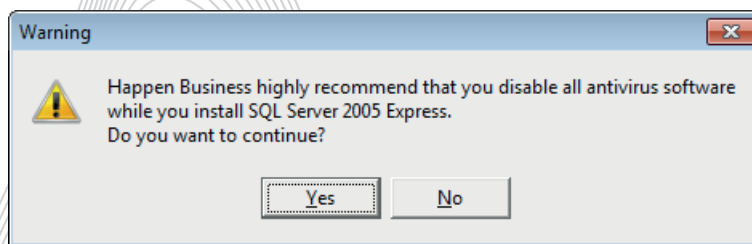
Please Note: All these instructions can be found in the 'Read Me' section.

Step 3 Click 'Install SQL Server'



Step 4 – Antivirus

You may now see this window:



Step 4a: We recommend you turn off any antivirus software you may have running.

Step 4b: Once you have turned off your antivirus software, please click 'Yes' to continue.

Step 5 – SQL Password (SA Password)

You will now be asked for the SQL Password. This is a password that YOU create, and you will need it again very soon in the installation process.

Your password needs to be complex i.e. upper and lower case characters and numbers e.g. Happen43

Please make sure you write this password down here: _____

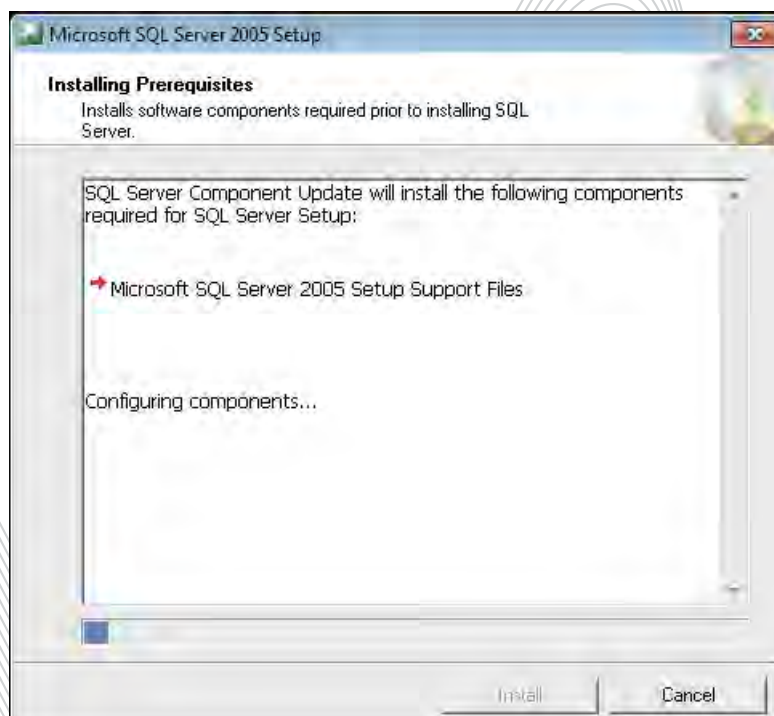
Once you have typed in your password and written it down, click 'OK'.

An 'SA Password' simply means the 'Systems Administrator' password for SQL.



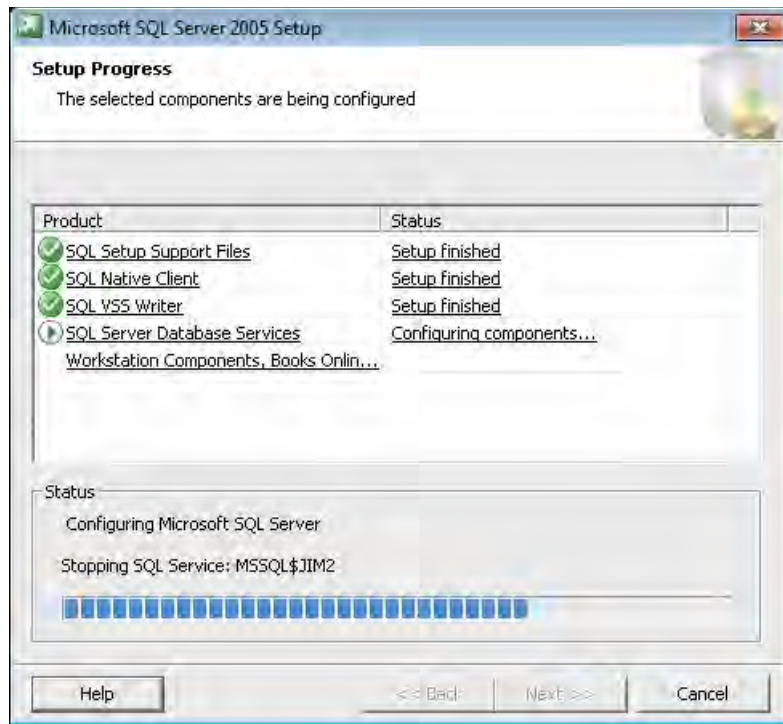
Step 6 – SQL Server Setup

You will now see this window: (You don't need to do anything here)



Step 7 – Continuing SQL Server Setup

The window will change to look like this: (You don't need to do anything here)

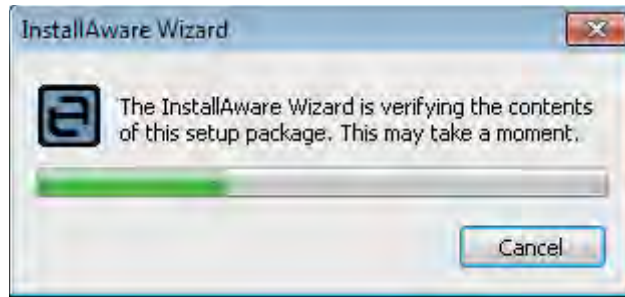


Step 8 – You will now be returned to the Jim2® Start Screen:

Step 9 – Click 'Install Jim2®' from the window (see below)



You will see the "InstallAware Wizard" window: (You don't need to do anything here)



Step 10 – Welcome to the Installation Wizard

To continue, please click "Next"



Step 11 – Accepting the License Terms

Please tick 'I accept the terms of the licence agreement' and click 'Next'.

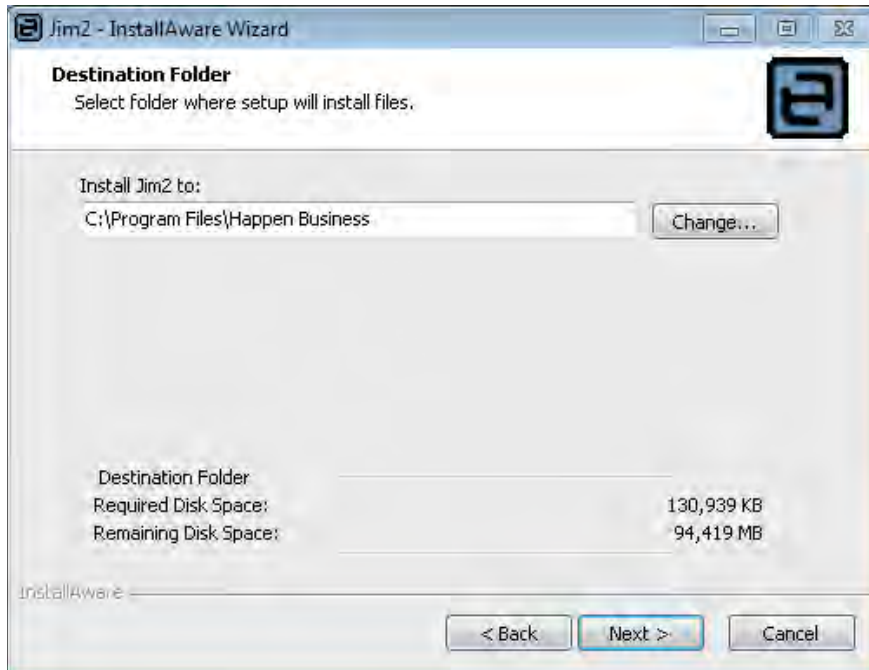
Step 12 – Choosing the Setup Type

Unless otherwise instructed by your Happen Business sales representative, please select "Complete" setup. ("Complete" is selected by default)



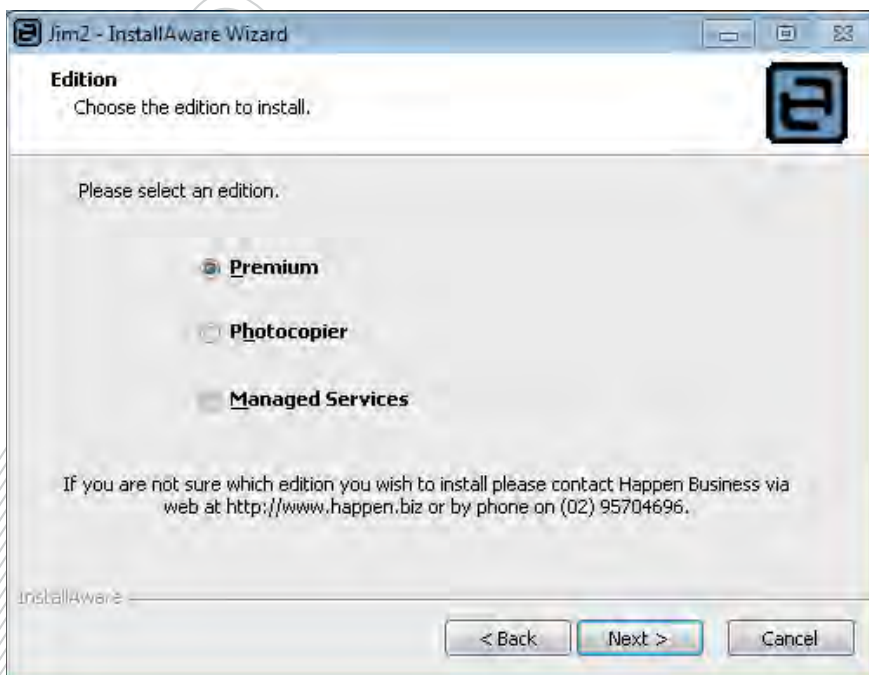
Step 13 – Destination Folder for Jim2®

Choose the location on your Computer where you would like to install Jim2® Business Engine. (The installation process will recommend the best location to install Jim2®.)



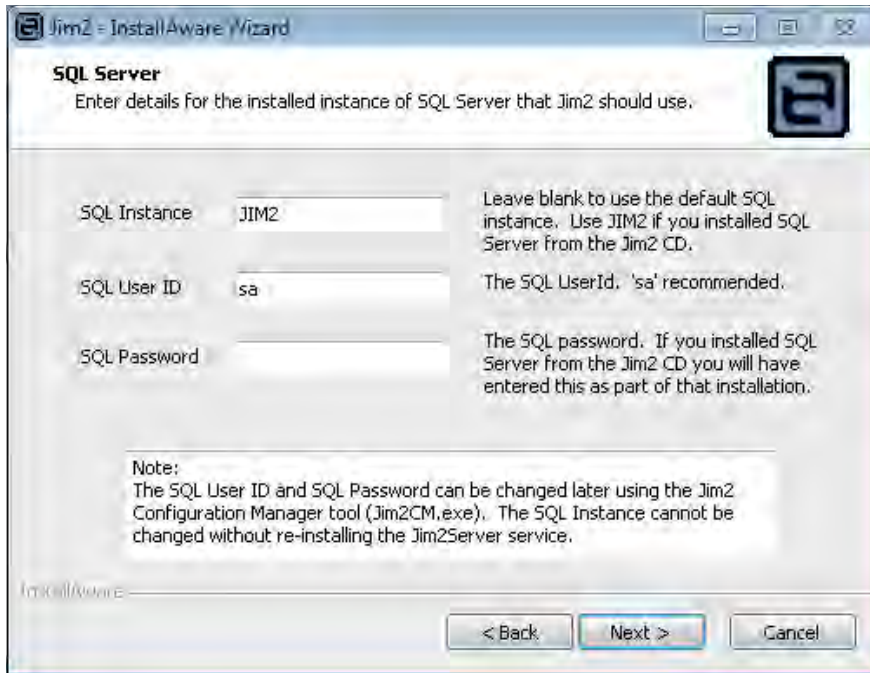
Step 14 – Jim2® Edition

Choose the Jim2® Edition you would like to install. (The default is Premium Edition.)



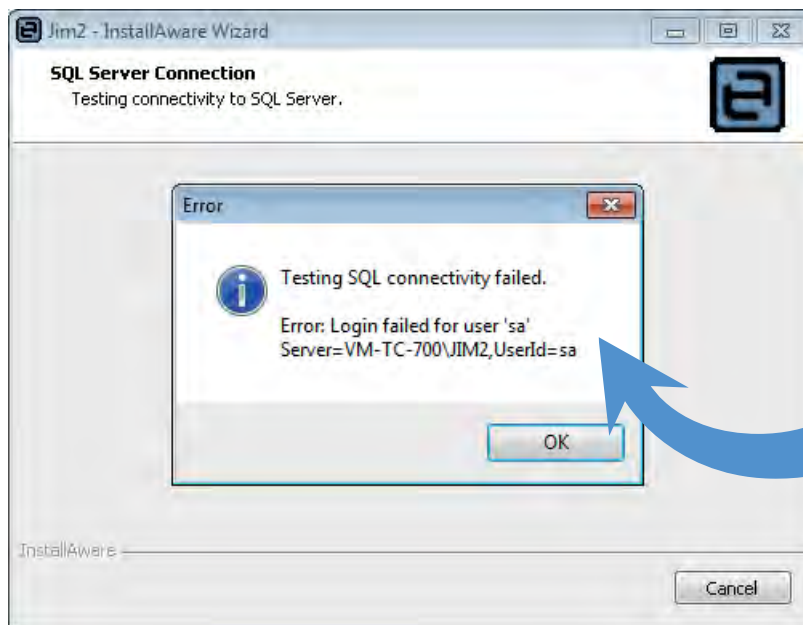
Step 15 – SQL Server details

You only need to type the SQL Password here (the other values are there automatically).
SQL Password = the SQL 'SA' Password you first entered in Step 5.



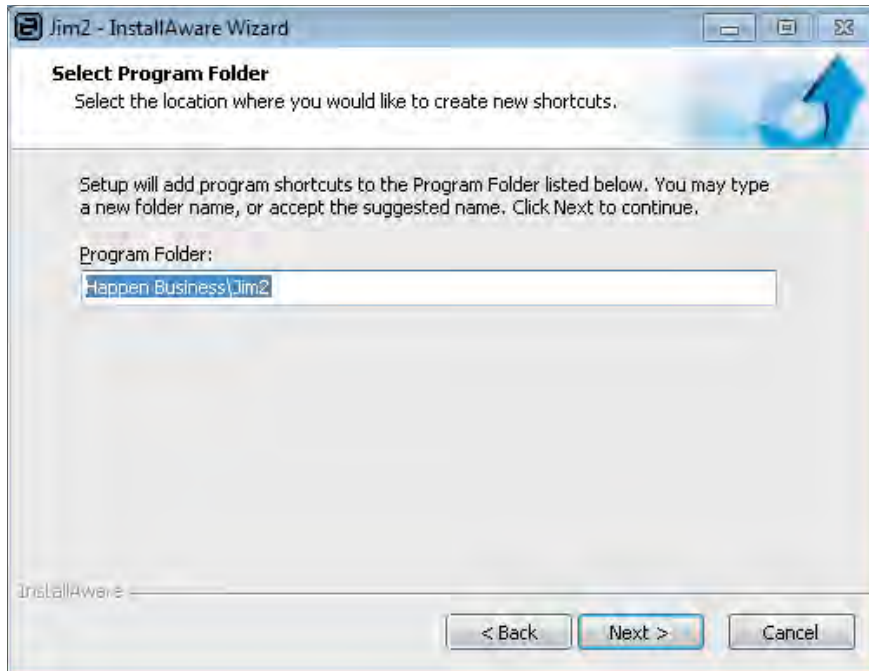
Step 15a: If you enter the wrong password you will see this error message:

Press OK to clear the error message, then type in the correct Step 5 'SA' password.



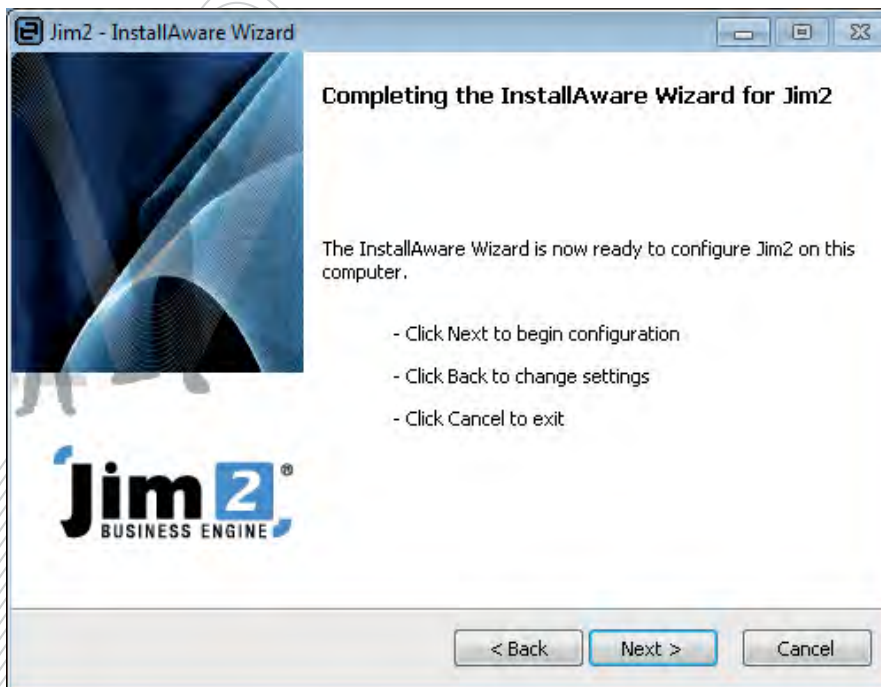
Step 16 – Selecting the Program Folder for Jim2®

We suggest you use the suggested Program Folder – Happen Business\Jim2.



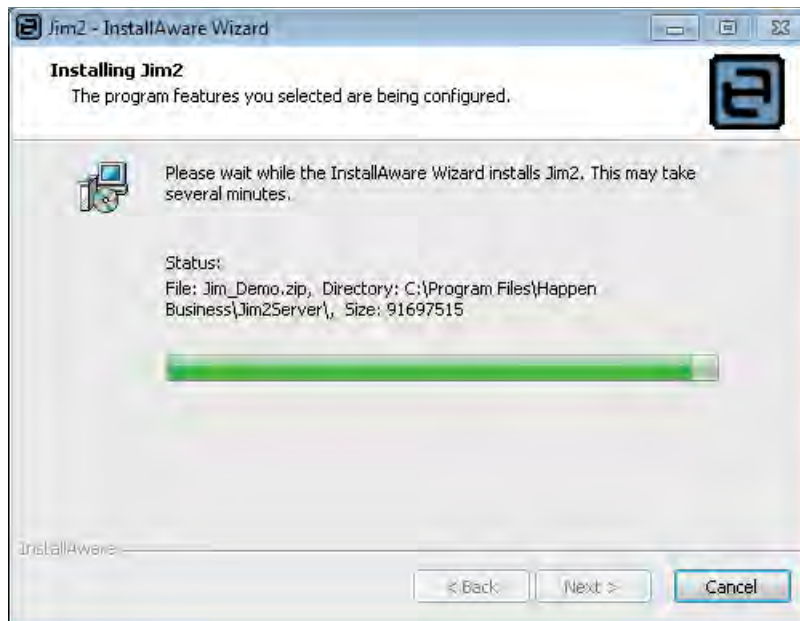
Step 17 – Complete the Install

Click 'Next' to continue installing Jim2®.



Step 18 – Installing Jim2®

You will see a window that looks like this during the install. Let this run by itself (you don't need to do anything here).



Step 19 – Installation completed

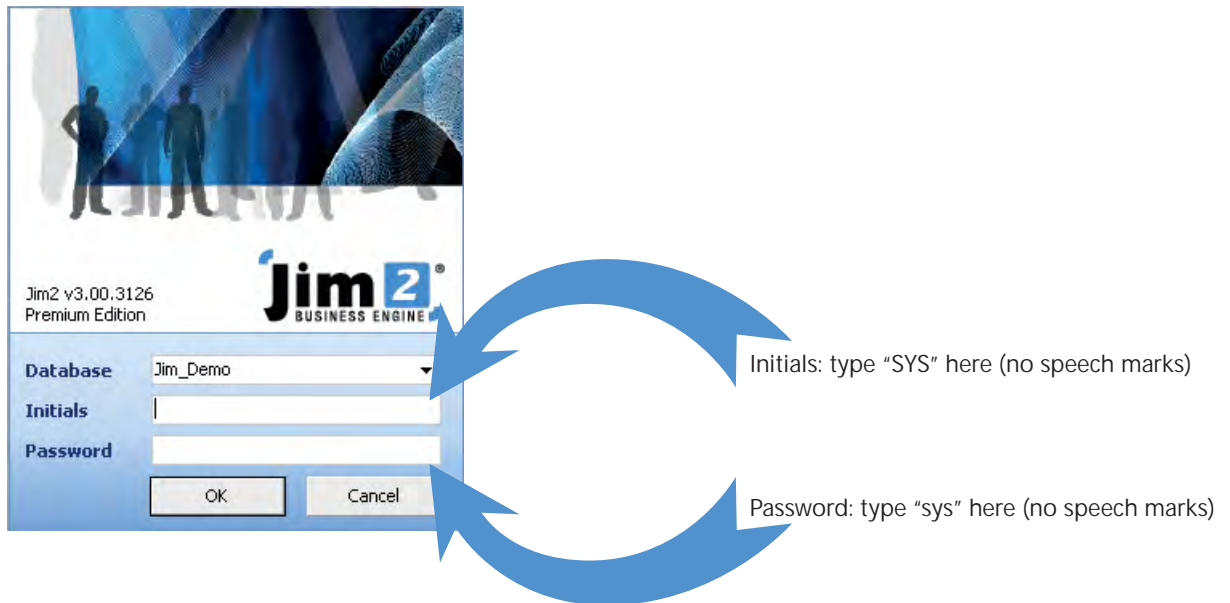
Hit "Finish" to complete the install and launch Jim2®.



Step 20 – Welcome to Jim2®! Now it is time to login.

Initials: SYS (this field will always appear as UPPERCASE)

Password: sys (not case sensitive)



The screenshot shows the Jim2 login interface. At the top, it says 'Jim2 v3.00.3126 Premium Edition'. Below that is the Jim2 logo and 'BUSINESS ENGINE'. The login form has three fields: 'Database' (set to 'Jim_Demo'), 'Initials' (empty), and 'Password' (empty). There are 'OK' and 'Cancel' buttons at the bottom. Two blue circular arrows point from text annotations to the 'Initials' and 'Password' fields.

Initials: type "SYS" here (no speech marks)

Password: type "sys" here (no speech marks)

Step 20a – Don't forget to turn your antivirus software back on.

Step 21 – Jim2® Registration (pictured below)

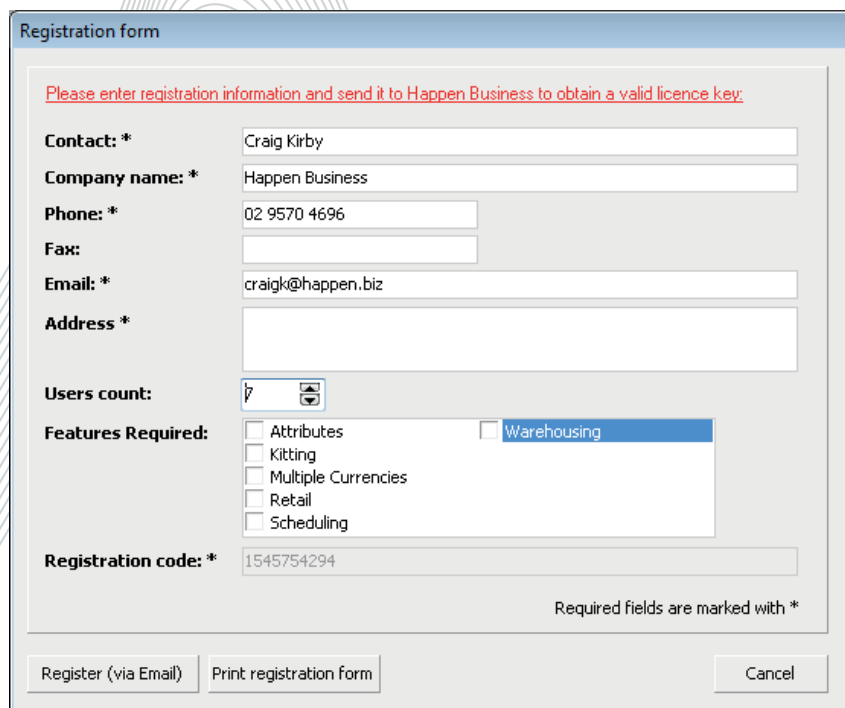
Please fill in the registration form and click 'Register (via email)'.

Users Count: Please specify the number of users you require (how many people will be using Jim2 in your business?)

Features Required: If you know the features required after speaking with your Happen Business Sales Representative, please go ahead and tick them.

If you are unsure, please leave all features required unticked, and when you register, we will get in touch with you.

Please note: Registration Code is automatically generated – you don't have to do anything).



The screenshot shows the 'Registration form' window. It contains the following fields and options:

- Contact: *** Craig Kirby
- Company name: *** Happen Business
- Phone: *** 02 9570 4696
- Fax:** (empty)
- Email: *** craigk@happen.biz
- Address *** (empty)
- Users count:** 7
- Features Required:**
 - Attributes
 - Kitting
 - Multiple Currencies
 - Retail
 - Scheduling
 - Warehousing
- Registration code: *** 1545754294

Required fields are marked with *

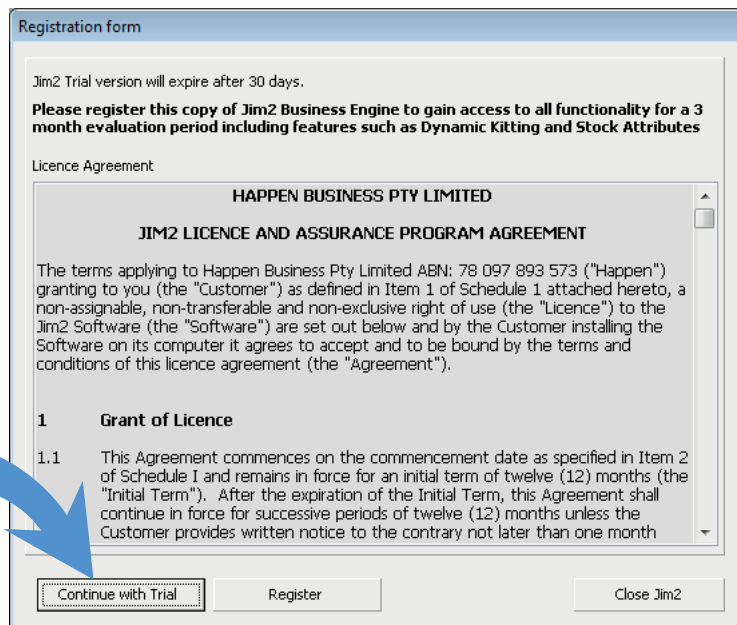
Buttons: Register (via Email), Print registration form, Cancel



The Registration form below will keep displaying until you have been sent a key from Happen Business to unlock all the features the software. You will be sent a key with instructions on how to use it (via email) in Business Hours after you register.

For assistance with receiving a key, please call Happen Business on 02 9570 4696.

You can still use Jim2® before you are sent a key – simply click 'Continue with Trial'.



This Jim2® Trial Version will expire after 30 days.

Congratulations, you are now using Jim2® Business Engine!

If you need further assistance with Jim2®, please call us on 02 9570 4696.

Jim2® is now installed on your computer and is ready to use for next time. When you want to start Jim2 again, please click the bottom left hand button in Windows:



This is also called the 'Start Button'.

And then click 'All Programs':

Happen Business should be highlighted as a new Program Group (only the first time after you have installed it).

Click on Happen Business, and then Jim2®.

Jim2® Business Engine will start!

Afterword:

You now have access to one of the most powerful business systems available in Australia.

If you are coming from an entry level accounting product and are feeling a little overwhelmed with Jim2® to start with, don't panic (or get frustrated!).

Please CALL US on 02 9570 4696.

We'll talk you through it and explain anything you need to better understand Jim2®.

Jim2® is very powerful software, and we want YOU to get the most out of it.

All the best!

Kind Regards,
The Team from Happen Business





Happen Business Pty Limited

29 - 33 Pitt Street

PO Box 126, Mortdale NSW 2223 Australia

p. +61 2 9570 4696

f. +61 2 8569 1858

www.happen.biz

